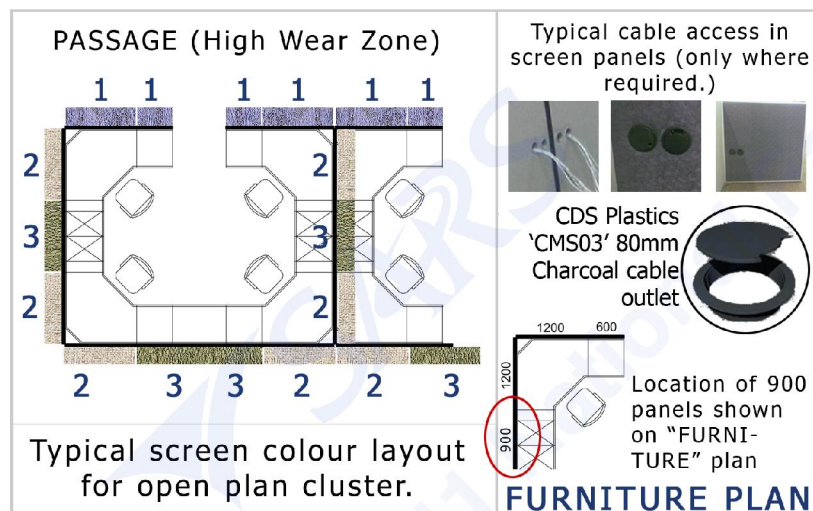


SCREEN SPECS

Last Revised: 27-07-2011

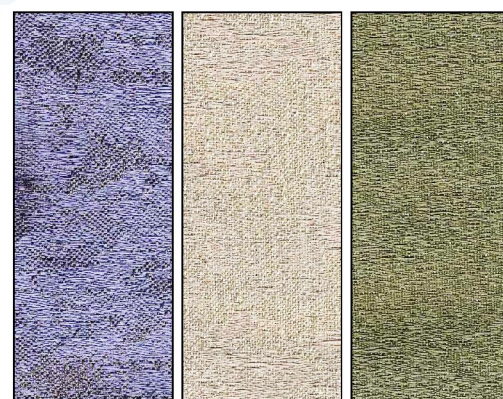
900w x 1200h Screen

Code: SCREEN-02-900-X (where X = Fabric Option)



FABRIC OPTIONS

(Not for "Executive")



1 2 3

SUPPLIER: Weavers World

- 1) Inspire (4516/21)
- 2) Inspire (4516/27)
- 3) Serene (4515/16)

<http://www.weaversworld.co.za>

NOTE:

- All screens 1200mm high AFFL.



CODE Description

CATEGORY	CATALOG NO	SCREEN WIDTH	FABRIC FINISH
SCREEN	02	900	X

TECHNICAL DATA

- Core:** This is of a rigid construction, not being dependent on the frame for its stability.
- Frame:** 23 mm wide aluminum extrusions of suitable thickness, which is an integral part of the screen and not removable and is coated gloss charcoal with a minimum of 60 microns of powder coating. Frame edge to allow for 0, 45, 90, 135 and 180 degree joining angles.
- Connectors:** Connectors between frame section to be from extruded aluminium only and NOT plastic/rubber. FULL HEIGHT.
- Upholstery:** 6 mm thick 'pinable' foam SBX33 bonded onto the core and covered over with approved fabric, which is stapled on the edge of the core.
- Height Adjustment:** To allow for uneven floors, the screen are to be height adjustable via plastic adjusting toes having carpet gripping studs on their underside to help prevent sideways movement of the screen.
- Reticulation & Fastening:** 80mm CDS Plastics CSM03 (charcoal) for cable reticulation to be allowed for if required with plastic grommit hole edging. Location of grommit hole edge 50mm below U/S of workstation tops and 50mm from screen frame edge. Screen system to allow for fixing mechanisms/brackets to underside of workstation for stability & support.
- Supplier:** Plasticised sticker fixed out of view stating: Supplier's name, physical address and contact details
- Warranty & Design:** Unit to be supplied with MINIMUM 5 year Warranty under normal office usage conditions. The specifications as contained in this document are the minimum SARS requirements. Vendor to take design responsibility & ensure correct specifications All screens delivered to site in 100 micron clear plastic wrapping.