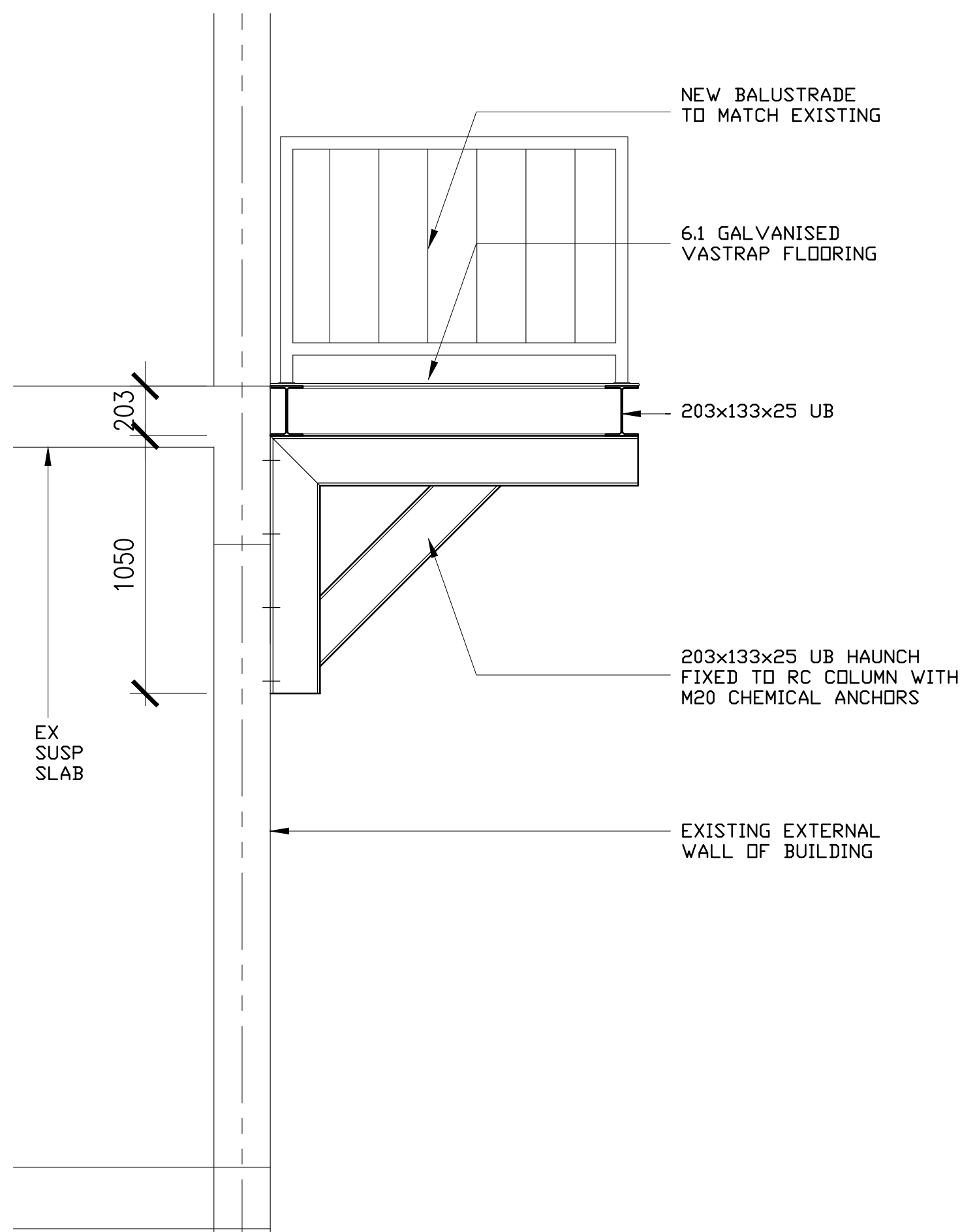
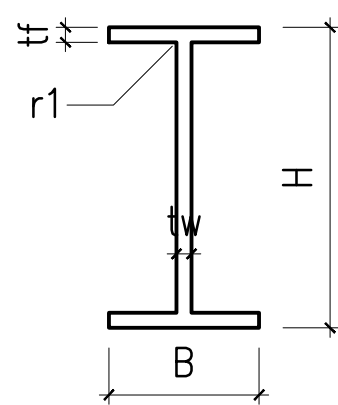


PLAN - STEEL WALKWAY  
SCALE 1:50

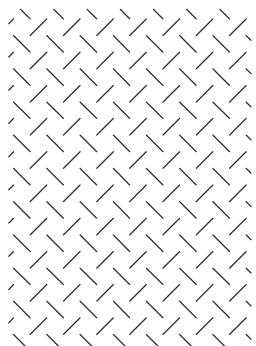


CROSS SECTION & HAUNCH DETAIL  
SCALE 1:25



DESIGNATION (H/B/M)	M (KG/M)	H (mm)	B (mm)	tw (mm)	tf (mm)	r1 (mm)	hw (mm)	A (10 <sup>3</sup> mm <sup>2</sup> )	about x-x
203x133x25 universal beam	231	259	85,4	3,09	46,3	71,2	31,0	62,1	29,5

UNIVERSAL BEAM DETAIL  
SCALE nts




NOMINAL PLATE SIZE (mm)	3,0 - 4,6mm	4,5 - 6,1mm	6,0 - 7,6mm	8,0 - 9,6mm
2500 x 1200	78.00	113.34	148.65	195.75
4000 x 1200	181.34	273.84	313.20	
8000 x 1200	363.69	475.68	626.40	

VASTRAP PLATE DETAIL  
SCALE nts

NOTE: ENGINEER TO DO FINAL INSPECTION PRIOR TO USE OF STAIR AND WALKWAY.  
CONTRACTOR TO ENSURE THAT ALL DIMENSIONS AND LEVELS ARE CHECKED BEFORE  
FABRICATION OF REMAINDER OF STAIR AND WALKWAY!

- STRUCTURAL STEEL NOTES**
1. ALL DIMENSIONS AND LEVELS TO BE CHECKED ON SITE AND ANY DISCREPANCIES BROUGHT TO THE ENGINEERS ATTENTION.
  2. FABRICATION AND ERECTION OF STEELWORK TO BE IN ACCORDANCE WITH NATIONAL BUILDING REGULATIONS AND SABS1200:PART2 SECTION H-1990.
  3. A COMPLETE SET OF SHOP DRAWINGS SHALL BE SUBMITTED TO THE ENGINEER FOR APPROVAL BEFORE FABRICATION COMMENCES. THESE DRAWINGS WILL BE SCRUTINISED TO ENSURE ADEQUATE END CONNECTIONS AND MEMBER SIZES ONLY. DIMENSIONAL ACCURACY IS THE SOLE RESPONSIBILITY OF THE CONTRACTOR.
  4. ALL STEELWORK UNLESS OTHERWISE NOTED, TO BE GRADE 350 W; HOT DIPPED GALVANIZED.
  5. IF SPLICES IN STEEL MEMBERS ARE REQUIRED FOR TRANSPORT OR MANUFACTURE, PROPOSALS FOR THIS MUST BE SUBMITTED TO THE ENGINEER FOR APPROVAL.
  5. PLATFORM FLOORING AND TREADS TO BE 4.5/6.1 GALVANISED VASTRAP OR SIMILAR APPROVED
  6. HANDRAILING TO MATCH EXISTING STEEL STAIR
  7. BASE PLATES SHALL BE GROUTED WITH A CEMENTITIOUS NON-SHRINK GROUT WITH A MINIMUM CRUSHING STRENGTH OF 40 MPa. GROUTING MUST TAKE PLACE BEFORE THE PRIMARY LOADS ARE APPLIED TO THE STRUCTURE.
  8. WELDING SHALL CONFORM TO AWS D1.1-90 SPECIFICATIONS.
  8. ALL WELDING TO BE MINIMUM 6MM. CONTINUOUS FILLET WELDS UNLESS OTHERWISE NOTED.
  9. ALL BOLTS SHALL BE GRADE 8.8 UNLESS OTHERWISE NOTED, AN A MINIMUM OF 2 BOLTS PER CONNECTION.
  10. ALL CONNECTION DETAILS TO EXISTING STRUCTURES TO BE VERIFIED ON SITE AND APPROVED BY THE ENGINEER.

REV	DATE	DRAWN	CHECKED	DESCRIPTION
PROJECT NUMBER-DRAWING NUMBER-STATUS-REVISION				
BD-740-ST-01-C-00				
PROJECT				
SARS MTHATHA CENTRE - PINETOWN MTHATHA				
DRAWING				
SUSPENDED WALKWAY				
 A DIH COMPANY				
8 Bauhinia Road Highveld Techno Park, 0157 Berkley Office Park Unit 9		Postnet Suite No 102 Private Bag x 121 Halfway House, 1685		T:012-940-3840 F:012-940-3841 info@dbiconsulting.co.za