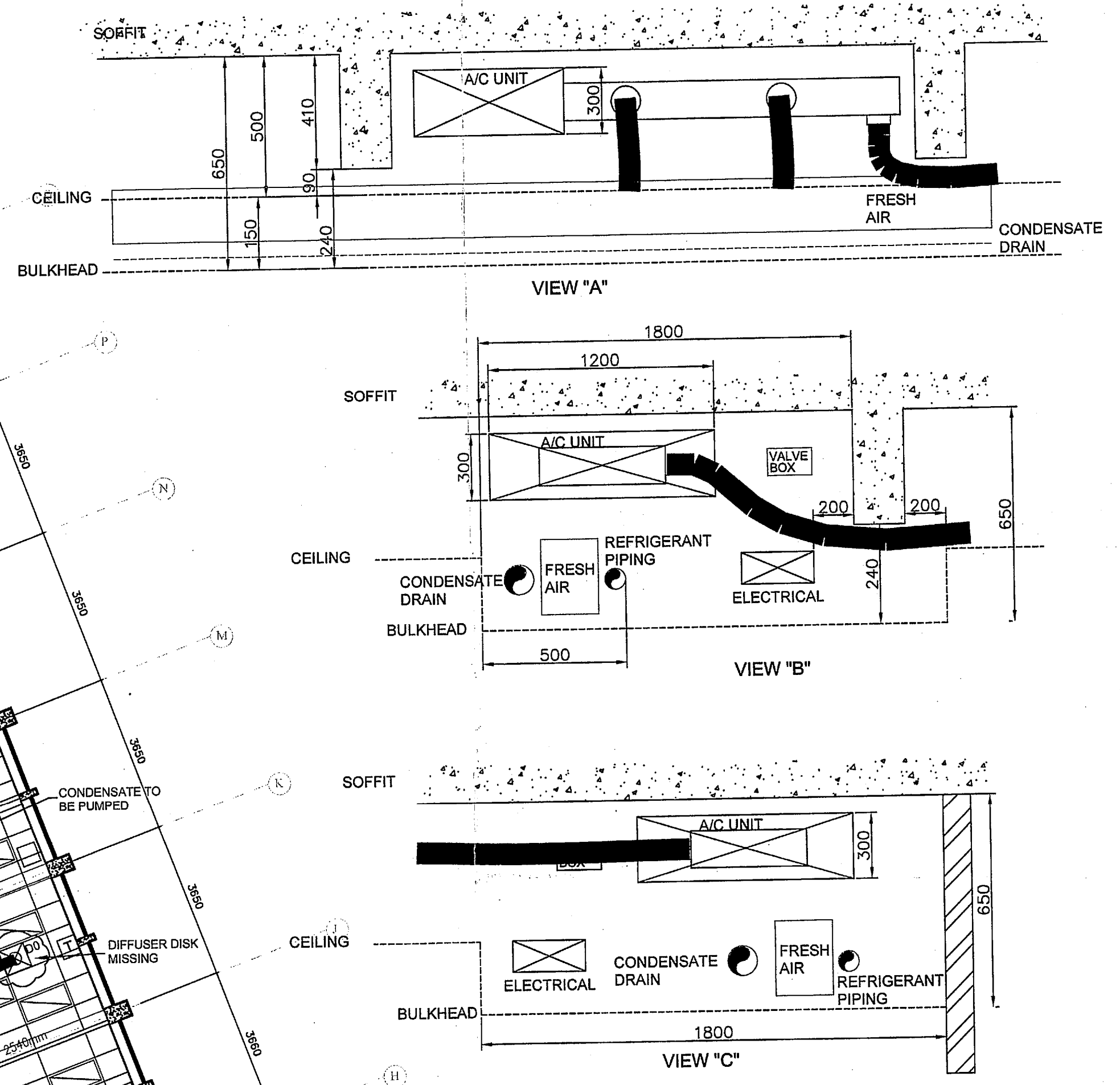
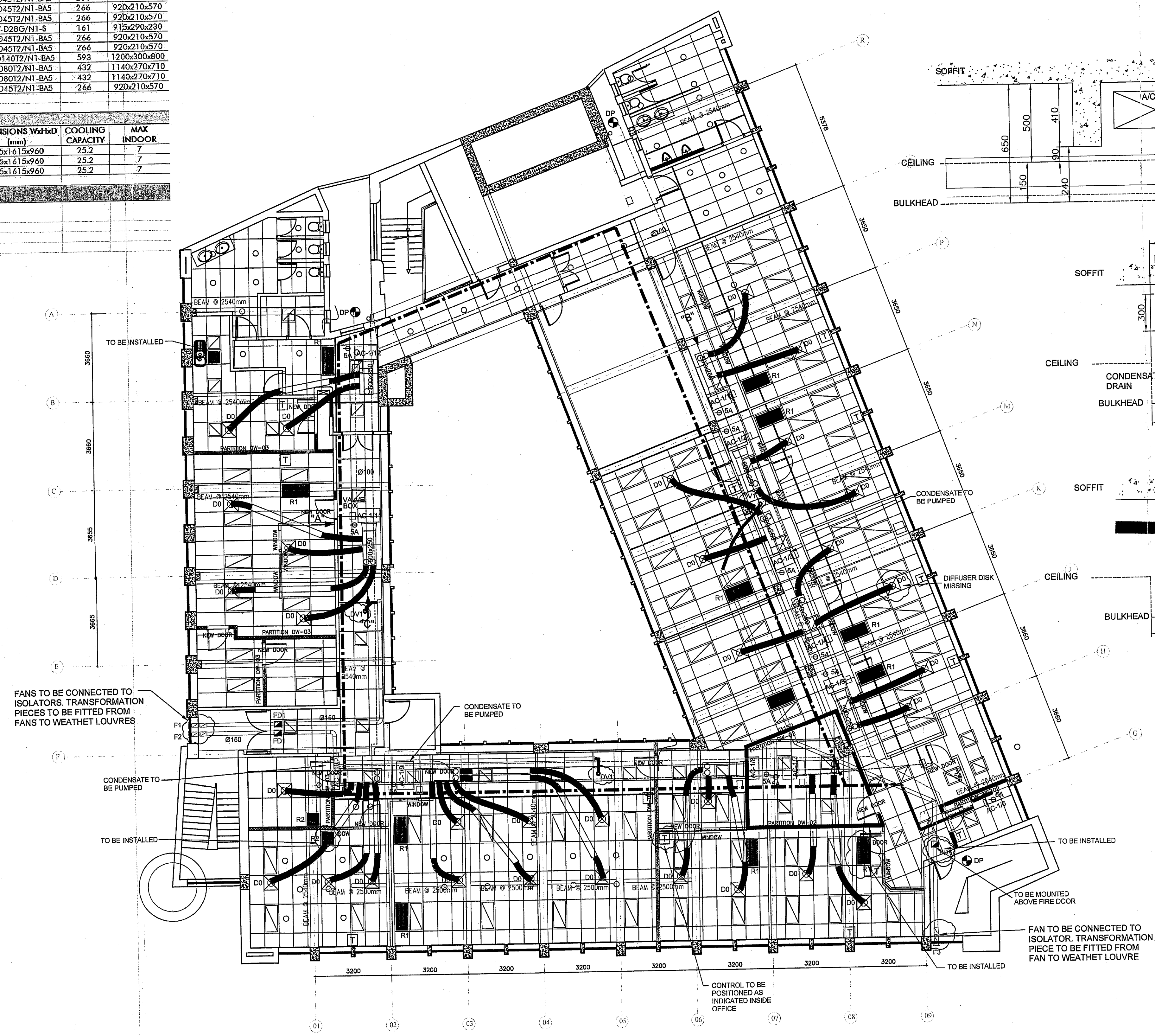


VRF SYSTEM - INFINITY						
INDOOR UNITS						
No	TYPE	COOLING CAPACITY (kW)	AREA SERVED (m²)	INFINITY MODEL	AIRFLOW (l/sec)	DIMENSIONS WxHxD (mm)
AC-6/1	DUCTABLE UNIT A5	4.5	40	MDV-D45T2/N1-BA5	266	920x210x570
AC-6/2	DUCTABLE UNIT A5	4.5	35	MDV-D45T2/N1-BA5	266	920x210x570
AC-6/3	DUCTABLE UNIT A5	4.5	35	MDV-D45T2/N1-BA5	266	920x210x570
AC-6/4	DUCTABLE UNIT A5	4.5	35	MDV-D45T2/N1-BA5	266	920x210x570
AC-6/5	DUCTABLE UNIT A5	4.5	35	MDV-D45T2/N1-BA5	266	920x210x570
AC-6/6	WALL MOUNTED	2.8	6	MDV-D28G/N1-S	161	915x290x230
AC-6/7	DUCTABLE UNIT A5	4.5	35	MDV-D45T2/N1-BA5	266	920x210x570
AC-6/8	DUCTABLE UNIT A5	4.5	35	MDV-D45T2/N1-BA5	266	920x210x570
AC-6/9	DUCTABLE UNIT A5	14	88	MDV-D140T2/N1-BA5	593	1200x300x800
AC-6/10	DUCTABLE UNIT A5	8	55	MDV-D80T2/N1-BA5	432	1140x270x710
AC-6/11	DUCTABLE UNIT A5	8	55	MDV-D80T2/N1-BA5	432	1140x270x710
AC-6/12	DUCTABLE UNIT A5	4.5	35	MDV-D45T2/N1-BA5	266	920x210x570
		68.8	489			
140W/m²						
OUTDOOR UNITS						
No	TYPE	ELECTRICAL SUPPLY AMPS	PHASE	DIMENSIONS WxHxD (mm)	COOLING CAPACITY	MAX INDOOR
OU-6/1	MDV-252(BW/D1RN1T(B)	30A	THREE PH	765x1615x960	25.2	7
OU-6/2	MDV-252(BW/D1RN1T(B)	30A	THREE PH	765x1615x960	25.2	7
OU-6/3	MDV-252(BW/D1RN1T(B)	30A	THREE PH	765x1615x960	25.2	7
FANS						
No	TYPE	AIRFLOW (l/sec)				
F1	AXIAL SUPPLY FAN	300				
F2	AXIAL SUPPLY FAN	300				
F3	AXIAL SUPPLY FAN	300				

DV1	DISC VALVE	AMS SIZE 16
-----	------------	-------------



- LEGEND
- FD1 = 20150 FUSIBLE LINK FIRE DAMPER
  - FD2 = 20150 FUSIBLE LINK FIRE DAMPER
  - R1 = 1200x800 RETURN AIR GRILLE
  - R2 = 600x800 RETURN AIR GRILLE
  - T = WALL MOUNTED THERMOSTAT
  - CONDENSATE PIPING
  - REFRIGERANT PIPING
  - VALVE BOX
  - DP = DRAIN POINT

REV.	DATE	DESCRIPTION	APPR.
R1	12-09-20	FOR CONSTRUCTION	PP
R2	12-10-06	DRAIN POINTS ADDED	PP
R3	12-11-07	NEW AC TABLE ADDED	PP
R4	13-02-05	AC NUMBERS CHANGED	PP
R5	13-08-05	FIRE DAMPERS ADDED TO FRESH AIR DUCTING	PP
R6	14-02-14	DV1 ADDED TO FRESH AIR INSTALLATION	PP
R7	14-04-11	SNAGS ADDED	PP
R8	14-05-30	POST INSPECTION UPDATES	PP

DRG. SIZE  
A1

**PLANTECH** ASSOCIATES  
ELECTRICAL AND MECHANICAL CONSULTING ENGINEERS  
P.O. BOX 146 PERSEQUOR PARK 0020 / TEL (012) 349-2253

PROJECT  
SARS REVENUE PE

TITLE  
LEVEL 6  
A/C LAYOUT

DWG. No.  
A1350-31-00-004 R8

A1350-31-00-004 R8