

Local Authority Stamp

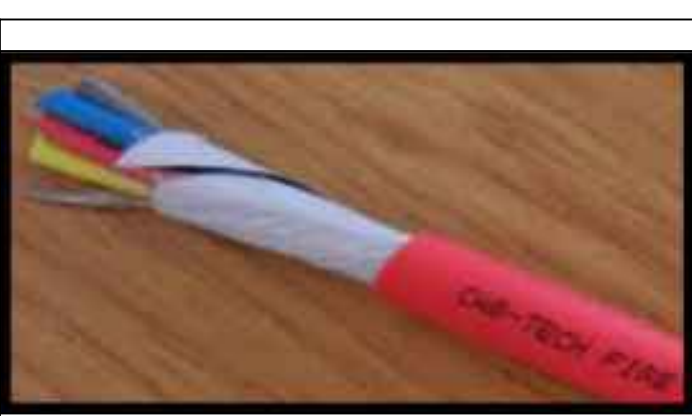
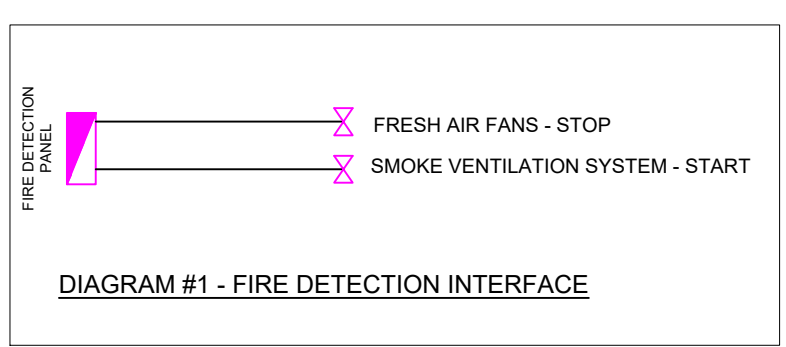
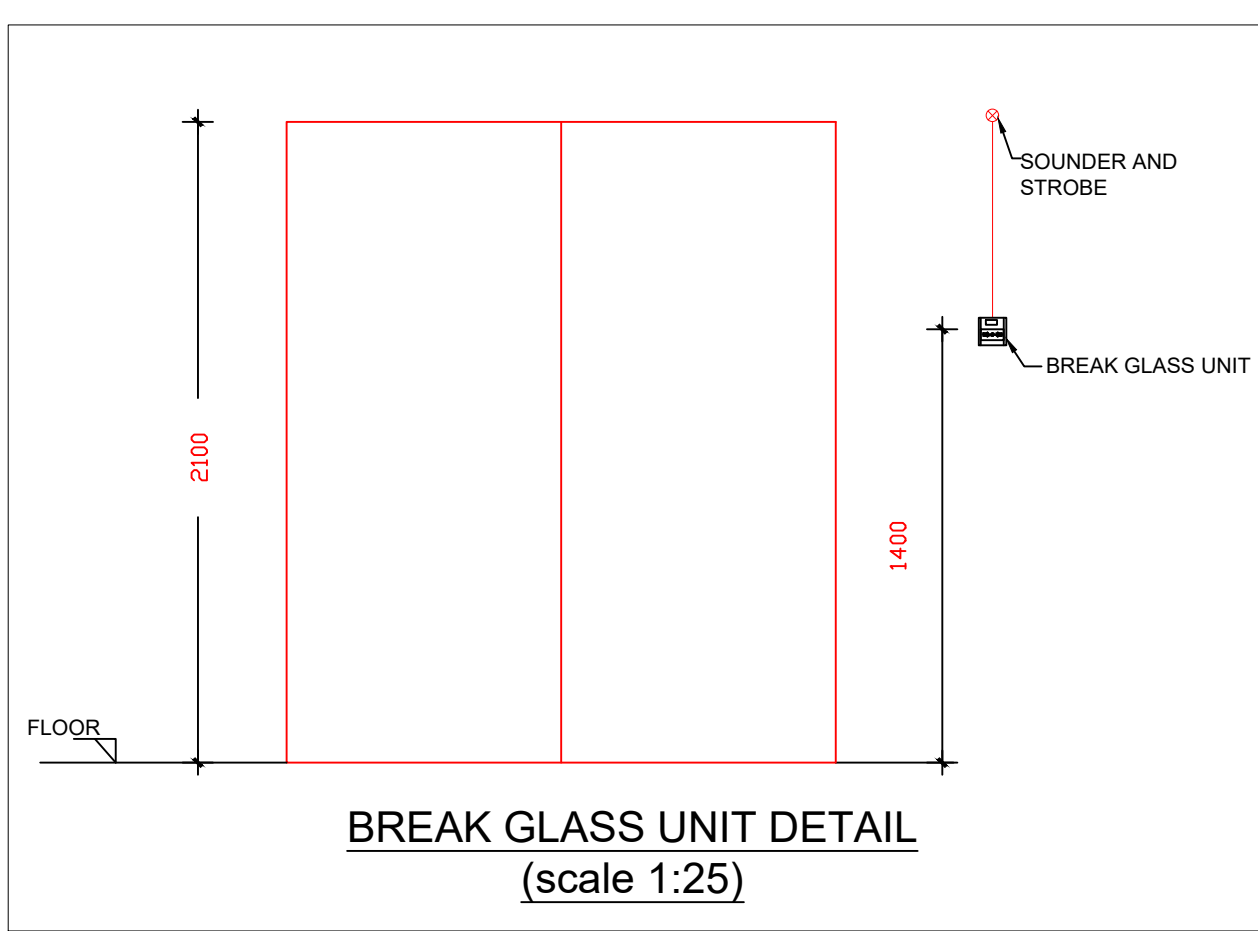
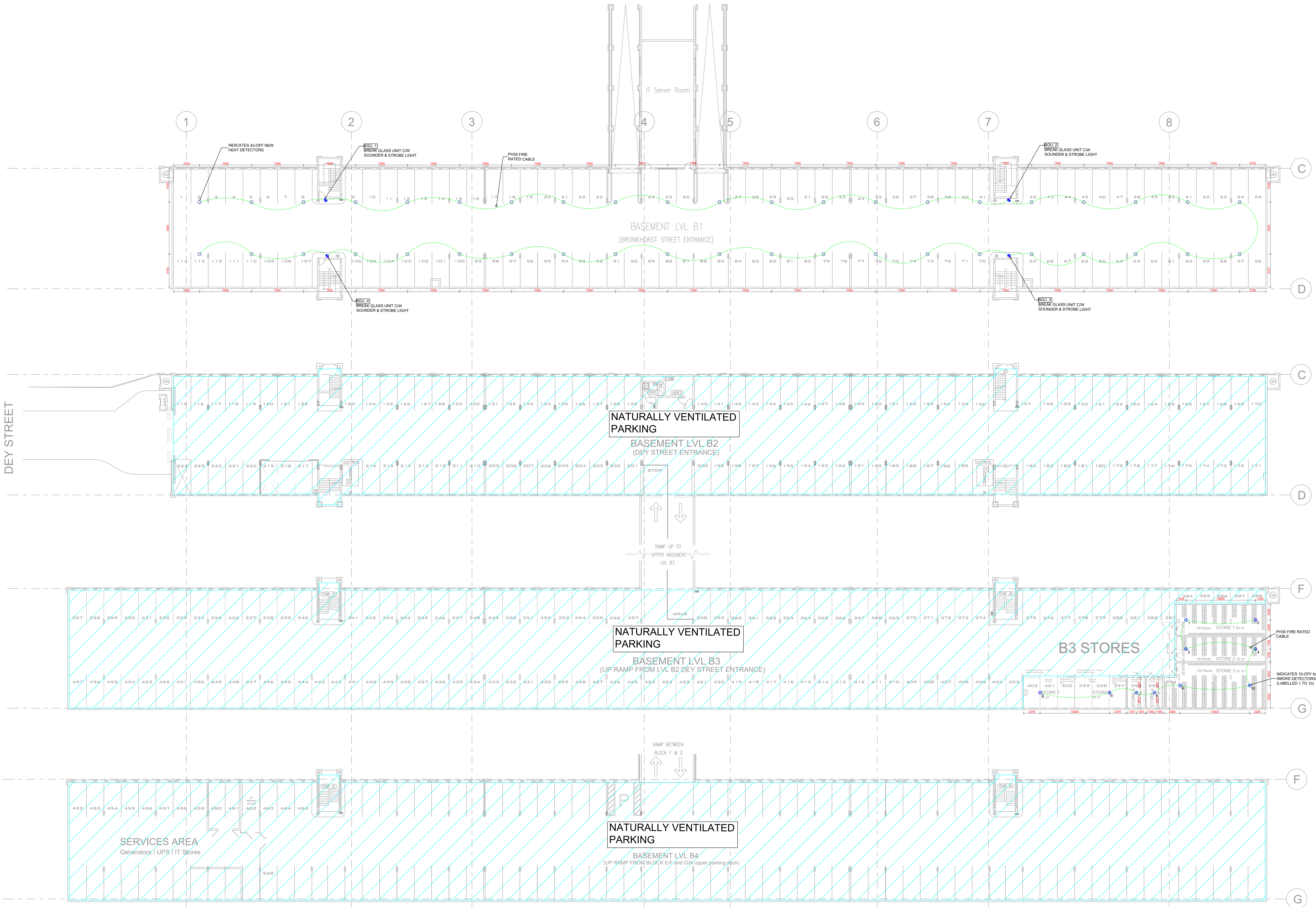


IMAGE 5 - PH30 CABLE

BRONKHORST STREET



BASEMENT PARKING B1, B2, B3 & B4 - PROPOSED DETECTION LAYOUT (Scale 1:200)

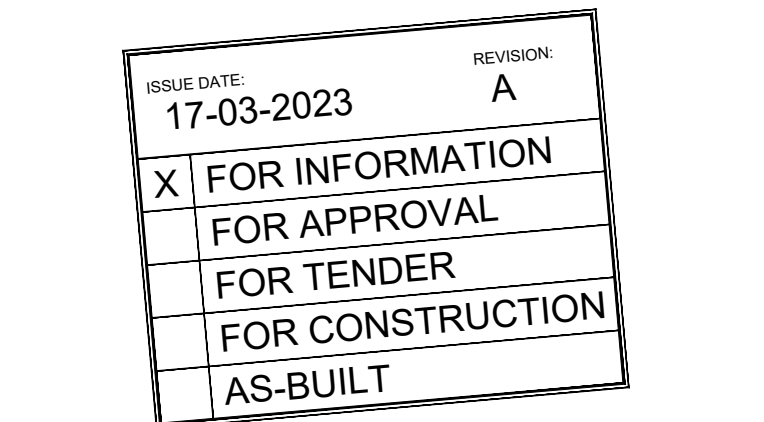
- FIRE DETECTION NOTES
- FIRE DETECTION DESIGN IN ACCORDANCE WITH SANS 10139
- SPACE CLASSIFICATION = J4 - PARKING
  - FLOOR AREA = 2830m<sup>2</sup>
  - POPULATION = 1/50m<sup>2</sup> = 57 PEOPLE
  - DETECTION CATEGORY = L1 SYSTEM
  - FIRE RESISTANT CABLES = PH30 IN ACCORDANCE WITH SANS 10139
  - AUDIBLE ALARM SOUND LEVEL = 65 DBA
  - WIRE WAYS = 25mm PVC THROUGHOUT C/W METAL SADDLES EVERY 500mm
  - THE FIRE DETECTION SYSTEM MUST BE INTERFACED WITH THE FOLLOWING
    - DUCTED A/C SYSTEM TO SHUT DOWN
    - FRESH AIR SYSTEM TO SHUT DOWN
    - SMOKE VENTILATION SYSTEM TO START

- SCOPE OF WORK
- SUPPLY AND INSTALL NEW DETECTION AND EVACUATION EQUIPMENT AS INDICATED.
    - 10-OFF NEW SMOKE DETECTORS
    - 42-OFF NEW HEAT DETECTORS
    - 4-OFF BREAK GLASS UNITS C/W SOUNDER AND STROBE LIGHTS
  - COMPLETE A FUNCTIONALITY TEST TO ENSURE THE SYSTEM OPERATES SATISFACTORILY UNDER A FIRE CONDITION.
  - CONDUCT A SOUND LEVEL TEST FOR THE EVACUATION SYSTEM.
  - TRAIN OCCUPANTS ON THE SYSTEM INSTALLATION.

FIRE DETECTION LEGENDS & COUNT			
SYMBOL/REFERENCE	DESCRIPTION		QTY.
⊕ BG	BREAK GLASS UNIT WITH SOUNDER AND STROBE		4
⊕ SD	SMOKE DETECTOR		10
⊕ HD	HEAT DETECTOR		42
—	PH30 FIRE RATED CABLE		840m
—	Ø25mm CONDUIT LINK		420m



SITE LOCATION



REVISIONS				
No.	Date	Description	Rev By	Chk By
A	17-03-2023	ISSUED FOR INFORMATION	SM	H.R.

CONSULTMECH Mechanical Engineers

09 Plantanus Street  
Kuijsriver 7580

Cell: (072) 948 4470  
Tel: (021) 961 1407  
Email: info@consultmech.co.za

PROJECT: LAHAE LA SARS - BASEMENT

OWG TITLE: BROOKLYN

OWG NUMBER: 21B09-D-600-01

DESIGNED BY: S. MAPUYA

CHECKED BY: H.D. ROUX

APPROVED BY: H.D. ROUX

SCALE: 1:200 @ A0

REV: A

ECSA NUMBER: 201070151

ECSA NUMBER: 201070151

COPYRIGHT AND RIGHT OF REPRODUCTION OF THIS DRAWING OR ANY PORTION THEREOF IS RESERVED BY THE ENGINEERS