



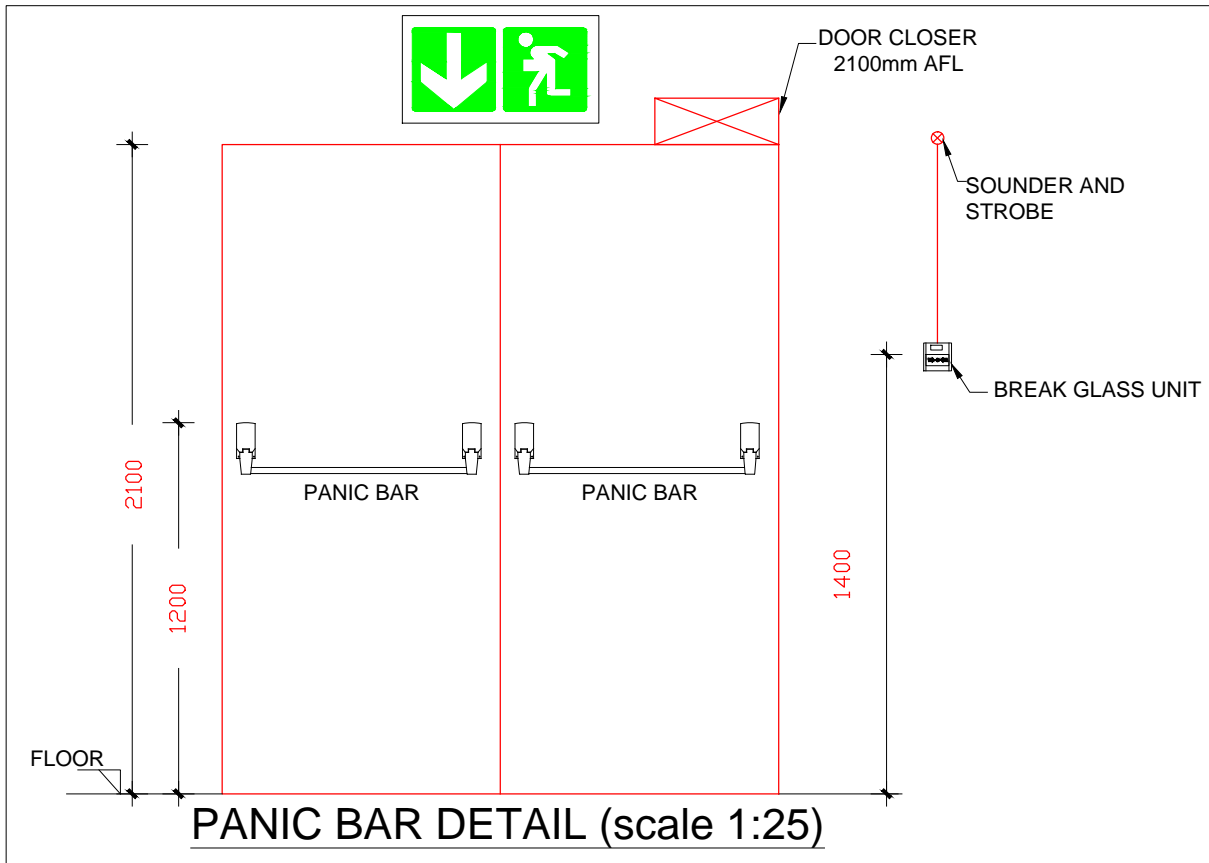
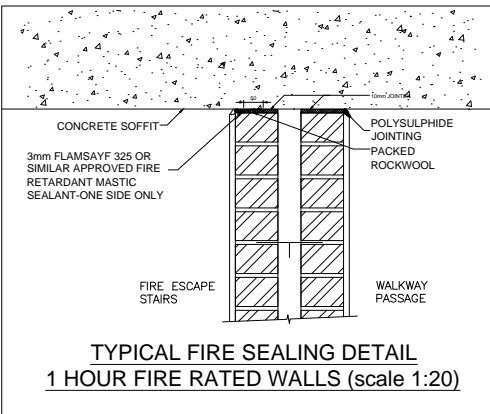
FIRE SERVICES DESIGN SUMMARY SCHEDULE				
1 OCCUPANCY INFORMATION				
1.1 FLOOR AREA:	1125	m ²	OCCUPIED	
1.2 OCCUPANCY CLASS:	G1		OFFICE	
1.3 POPULATION:	1/SEAT	= 104	NUMBER OF PEOPLE	
1.4 ROUTES OF ESCAPE required:			1-off 1281mm & 1-off 1060mm wide	
2 FIRE PROTECTION EQUIPMENT				
2.1 FIRE HYDRANT:	1/1000	m ² = 1	REQUIRED, 90 METERS APART	
2.2 FIRE HOSE REEL:	1/500	m ² = 2	REQUIRED, WITH 30 METER LONG HOSES	
2.3 EXTINGUISHERS:	1/200	m ² = 6	REQUIRED, 4.5 kg DCP TYPE	
2.4 SPRINKLER PROTECTIONS:	NO	NOT REQUIRED		
3 RELATED SERVICES				
3.1 FIRE DETECTION:	YES	THROUGHOUT THE BUILDING IN ACCORDANCE WITH SANS 10139-2012 (Category L1)		
3.2 SMOKE VENTILATION:	NO	COMPARTMENTALISED		

- SCOPE OF WORKS CLARIFICATION**
- A. FIRE CONTRACTOR
- SERVICE AND RE-USE EXISTING FIRE EXTINGUISHERS AND 2-OFF FIRE HOSE REELS.
 - SUPPLY & INSTALL NEW FIRE FIGHTING EQUIPMENT AS INDICATED ON PLAN.
 - SUPPLY & INSTALL NEW FIRE SIGNAGE AS INDICATED ON PLAN.
 - NEW EVACUATION PLANS & PROCEDURES.
- B. ELECTRICAL CONTRACTOR
- SUPPLY AND INSTALL EMERGENCY LIGHTING THROUGHOUT THE SPACE AS SHOWN ON PLAN, c/w BATTERY BACKUP.
- C. BUILDER.
- SUPPLY AND INSTALL PANIC BARS c/w WHITE ON GREEN "PUSH BAR TO OPEN" SIGN
 - PROVIDING PENETRATIONS THROUGH CEILINGS AND WALLS AND MAKING GOOD THEREOF.
 - FIXING OF EXTINGUISHER BACKING BOARDS TO WALLS SUPPLIED BY FIRE CONTRACTOR.
 - SUPPLY & INSTALL NEW FIRE DOORS C/W 25mm STEEL FRAME AND DOOR CLOSER.
 - FIRE SEALING OF PENETRATIONS THROUGH FIRE WALLS.

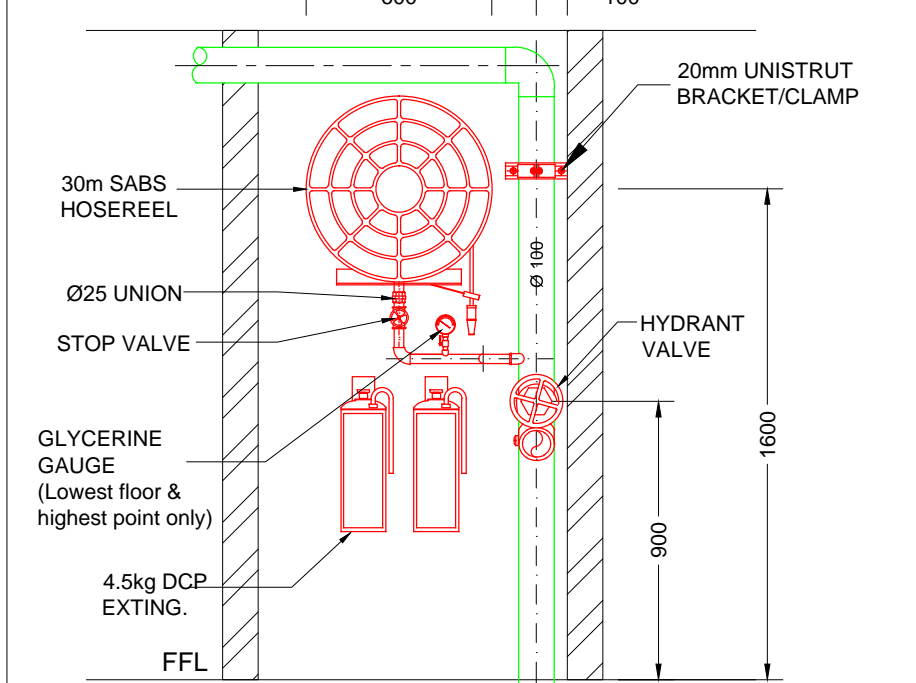
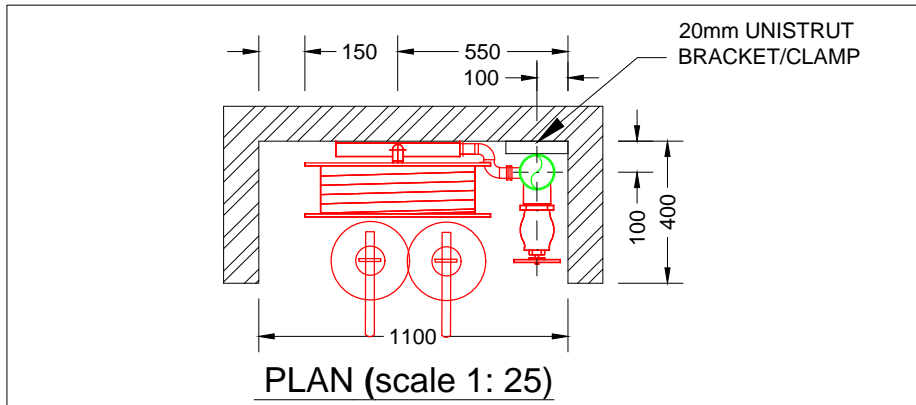
CLOUDED INDICATES EXISTING EQUIPMENT

FIRE SIGNS & EQUIPMENT COUNT															
SYMBOL	→	←	↗	↘	EXIT	→	→	→	→	→	→	→	→	→	→
REFERENCE	E1	E2	E3	E6	E6	E7	F4	F5	F6	F13	F16	F19	F45	F31	FHR
QUANTITY	7	7	4	1	1	1	2	3	3	3	-	-	1	2	2

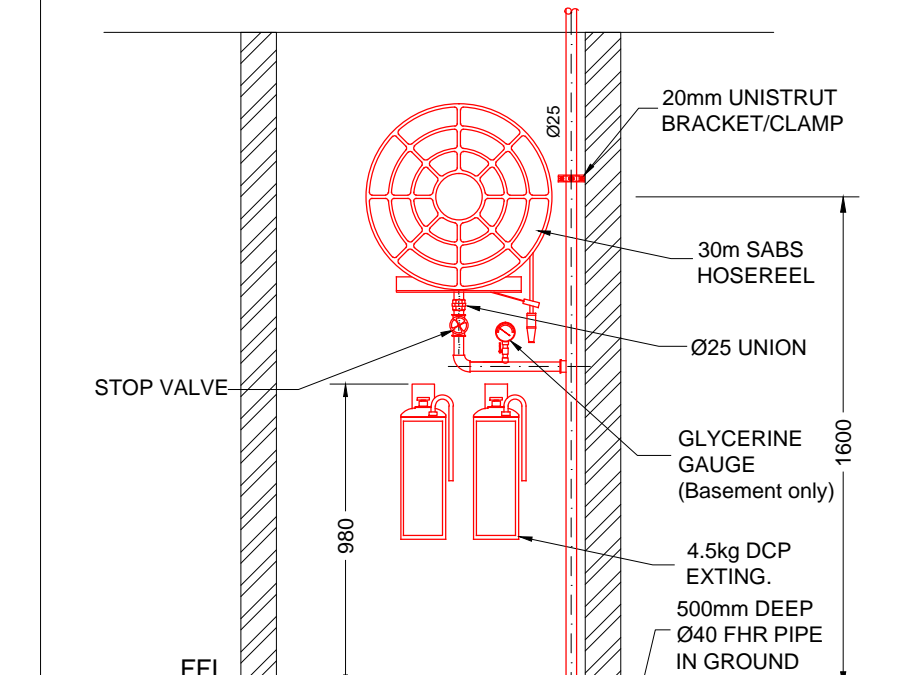
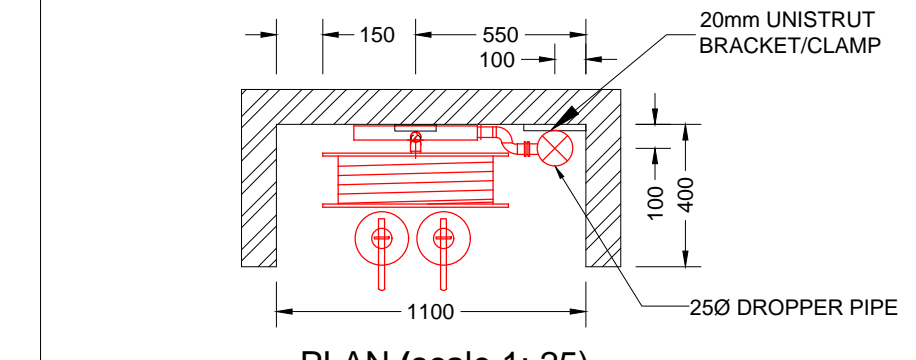
FIRE DOOR SCHEDULE									
DOOR TAG	SWING	FIRE RATING	DOOR SIZE	WIDTH (mm)	HEIGHT (mm)	NORMAL DOOR	OPEN	CLOSED	PANIC BAR
FD_1	ONE WAY	60 minute	815	2100	N/A	YES			NO



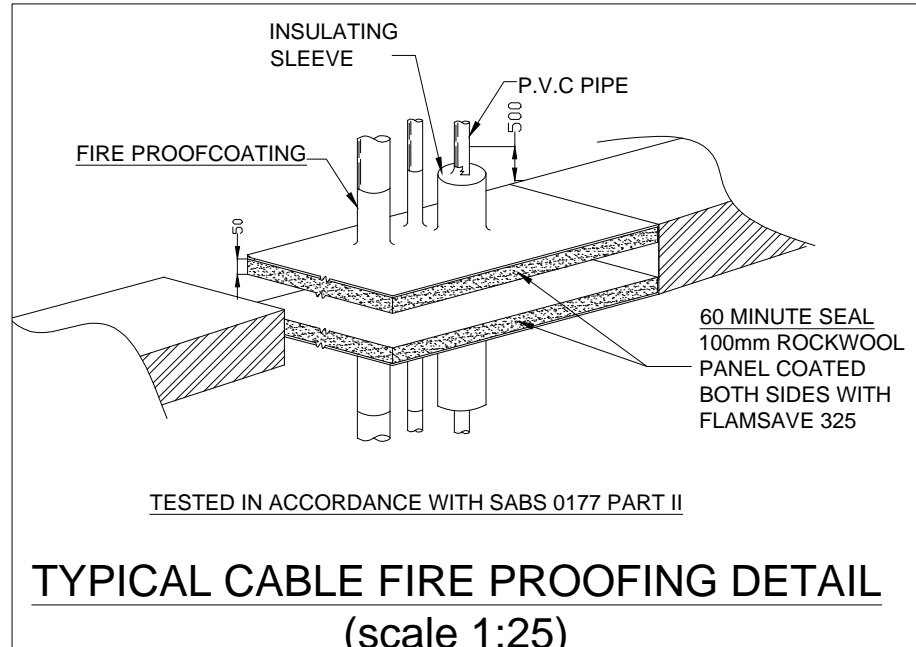
- FIRE INSTALLATION NOTES**
- PORTABLE FIRE EXTINGUISHERS**
- FIRE EXTINGUISHERS SHALL BE 4.5kg AND 9kg DRY CHEMICAL POWDER TYPE AND SHALL COMPLY WITH SABS 810.
- ALL FIRE EXTINGUISHERS SHALL BE MOUNTED ON WOODEN BACKING BOARDS.
- FIRE HOSE REELS**
- FIRE HOSE REELS SHALL CONFORM TO SABS 543.
- ALL FIRE HOSE REELS SHALL BE COMPLETE WITH 30 METERS OF HOSE AND SHALL HAVE A MINIMUM FLOW RATE OF 0.5 l/s AT 300 kPa.
- FIRE HYDRANTS**
- FIRE HYDRANTS SHALL COMPLY WITH SABS 543 AND HAVE A MINIMUM FLOW RATE OF 20 l/s AT 300 kPa.
- PIPING**
- NO PIPEWORK TO BE EMBEDDED IN SCREENED OR CONCRETE FLOORS.
- ALL PIPEWORK SHALL CONFORM TO SABS 62 (STEEL, MEDIUM).
- THE DISTANCE BETWEEN PIPE SUPPORT BRACKETS FOR THE HORIZONTAL & VERTICAL PIPEWORK, SHALL NOT EXCEED THE FOLLOWING:
- | NOMINAL DIAMETER | MAXIMUM SPACING |
|------------------|-----------------|
| < 65 MM | 4M |
| > 65MM | <100MM |
- PIPING SHALL BE PROPERLY CLEANED OFF SITE, FROM RUST & LOOSE MILL SCALE WITH A HARD WIRE, & DECREASED PRIOR TO APPLICATION OF A RED OXIDE PRIMER.FINAL COATS OF PAINT TO BE 2 OFF SIGNAL RED, HIGH GLOSS ENAMEL TO SABS 630.
- ALL BRACKETS, SUPPORTS & FITTINGS TO BE GALVANIZED.
- ALL SCREWED JOINTS TO COMPLY WITH BS 21 OR SIMILAR.
- SEALING OF JOINTS WILL BE WITH HEMP, STOGG OR PTFE TAPE.
- HYDRAULIC PRESSURE TESTING SHALL BE DONE TO 15 BAR FOR A PERIOD OF 24 HOURS.
- SYMBOLIC SAFETY SIGNAGE**
- SYMBOLIC SAFETY SIGNAGE SHALL COMPLY WITH SABS 1186 PART V AND SHALL BE OF THE PHOTOLUMINESCENT TYPE.
- SIGNAGE SHALL BE INSTALLED SUCH AS TO CLEARLY INDICATE THE POSITIONS OF ALL FIRE EQUIPMENT AND ESCAPE ROUTES.
- EACH FLOOR LEVEL SHALL BE NUMBERED IN THE ESCAPE STAIRS.
- SIGNAGE ON DRAWING IS AN INDICATION OF SIGNAGE REQUIRED.
- FINAL SIGNAGE TO BE DETERMINED ON SITE.
- ADDITIONAL SIGNAGE TO BE ADDED SHOULD IT BE REQUESTED BY THE LOCAL AUTHORITIES.
- FINAL FIRE SIGNAGE IS TO BE DETERMINED ON SITE WITH THE COUNCIL'S FIRE OFFICER.
- FIRE DOORS**
- FIRE DOORS OF THE RATING AND WIDTH AS INDICATED ON THE DRAWINGS, SHALL BE INSTALLED AND SHALL COMPLY WITH SANS 1253.
- ALL FIRE DOORS TO BE FITTED WITH SELF CLOSING MECHANISMS
- FIRE ALARM / DETECTION**
- FIRE DETECTION AND ALARM SYSTEM SHALL BE INSTALLED AS INDICATED ON THE DRAWINGS AND IN ACCORDANCE WITH SANS 10139.
- ESCAPE DOORS**
- ALL ESCAPE DOORS SHALL BE COMPLETE WITH FIRE ESCAPE IRONMONGERY.
- FIRE ESCAPE ROUTES**
- FIRE ESCAPE ROUTES, INCLUDING CORRIDORS AND STAIRWAYS SHALL HAVE MINIMUM WIDTH OF 500mm UNLESS SHOWN OTHERWISE.
- ALL ESCAPE ROUTES SHALL HAVE A FIRE RESISTANCE AS INDICATED.
- ALL EMERGENCY ROUTES SHALL HAVE A FIRE RESISTANCE AS INDICATED ON THE DRAWINGS.



HYDRANT, FIRE HOSE & EXTINGUISHER ELEVATION (scale 1: 25)



FIRE HOSE & EXTINGUISHER ELEVATION (scale 1: 25)



- FIRE SERVICES LEGEND**
- BREAK GLASS UNIT
 - FIRE HYDRANT
 - DIRECTIONAL ARROW
 - HOSE REEL
 - 4.5kg DCP FIRE EXTINGUISHER
 - FIRE ESCAPE
 - 60MIN FIRE RATED LIFT LANDING DOOR
 - 60 MINUTE FIRE RATED WALL

FIRE DESIGN CONFIRMATION			
DEEMED TO SATISFY WITH SANS 10400	N/A		
RATIONAL ASSESSMENT	YES		
RATIONAL DESIGN EQUIVALENT OR SUPERIOR TO SANS 10400	N/A		

ISSUE DATE:	REVISION:
2023-08-24	A
FOR INFORMATION	
FOR APPROVAL	
FOR TENDER	
FOR CONSTRUCTION	
AS-BUILT	

REVISIONS					
No	Date	Description	Rev By	Ckd By	
A	24/08/2023	ISSUED FOR INFORMATION	S.M	H.R	

09 Plantanus Street
Kuilsriver
7580

CONSULTMECH
Mechanical Engineers

Cell: (072) 948 4470
Tel.: (021) 903 1407
Email: info@consultmech.co.za

PROJECT: LAHA LA SRS - BLOCK D

DWG TITLE: BROOKLYN

DWG NUMBER: 21B09-F-504-06

DESIGNED BY: S. MAFUYA

CHECKED BY: H.D ROUX

APPROVED BY: H.D ROUX

SCALE: 1:100 @ A1

ECSA NUMBER: 201070151

ECSA NUMBER: 201070151

COPYRIGHT AND RIGHT OF REPRODUCTION OF THIS DRAWING OR ANY PORTION THEREOF IS RESERVED BY THE ENGINEERS

SECOND STOREY - PROPOSED FIRE SERVICES LAYOUT (Scale 1:100)