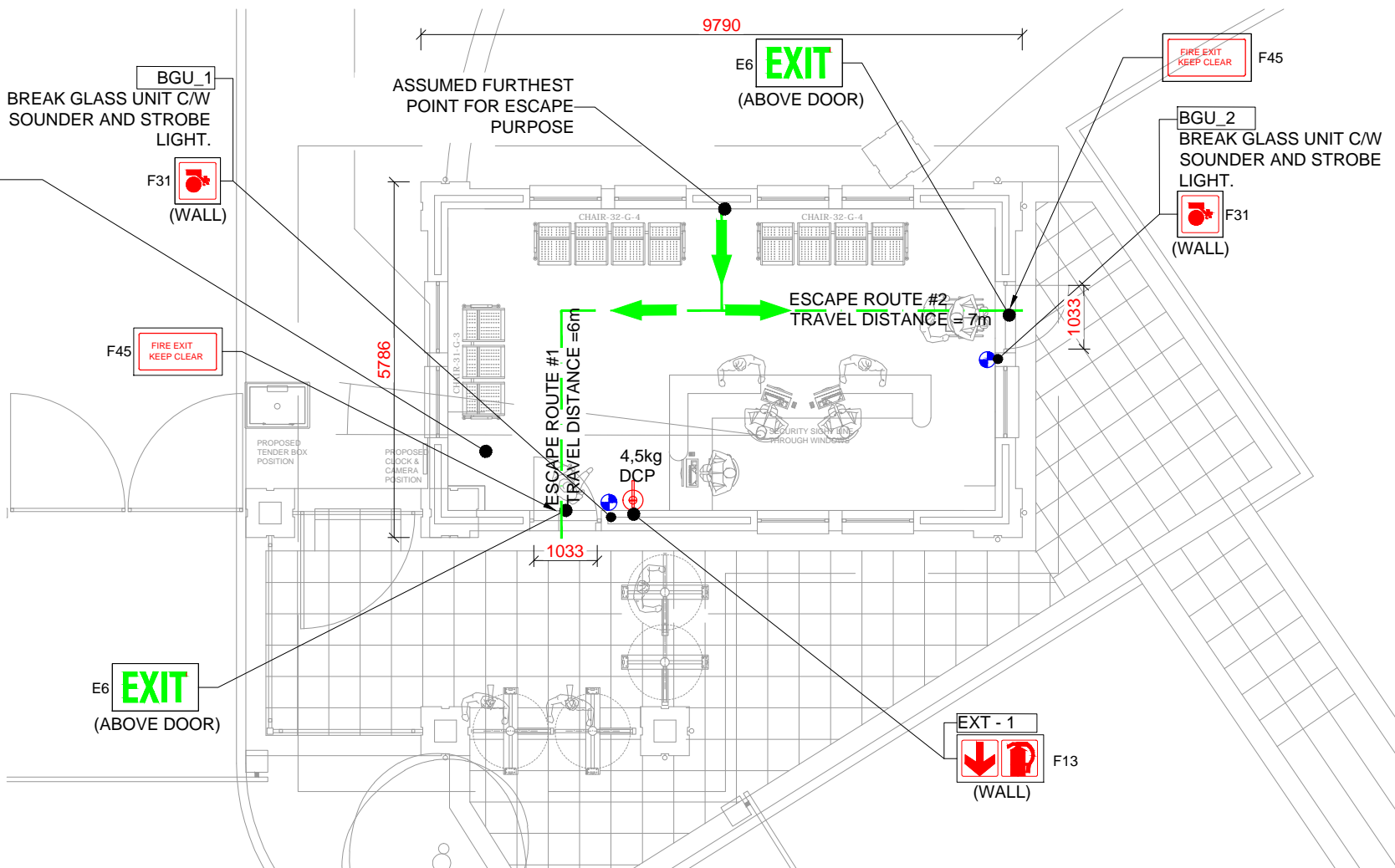


V:\company\sham\SERVER\01 Projects\2021\21B09 - REF 600014614 SANS TENDER\MECH\VIRE\SCNAGE\21B09-F-511 -BLOCK /PROPOSED\INFORMATION\REV-AF-511-01-REV\_A\_2023-09-04.dwg, 2023/09/05 09:58:23 AM, K.K

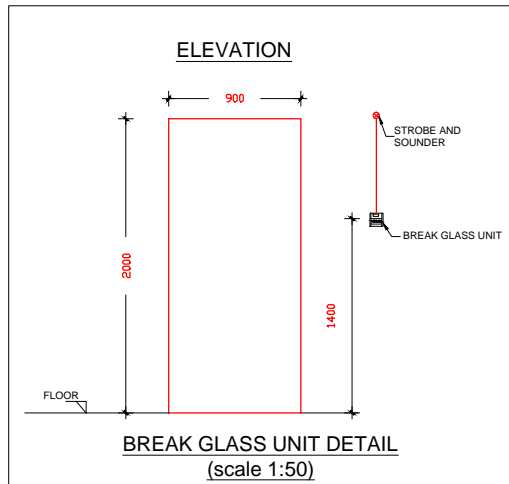
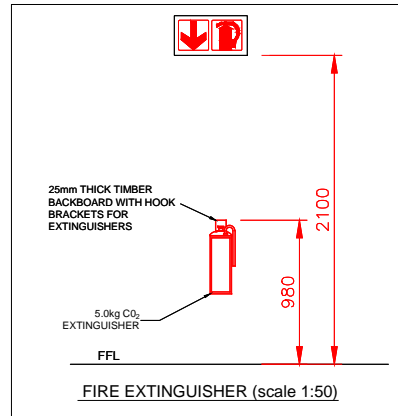
Local Authority stamp

FIRE SERVICES DESIGN SUMMARY SCHEDULE				
1 OCCUPANCY INFORMATION				
1.1 FLOOR AREA:	44	m <sup>2</sup>		OCCUPIED
1.2 OCCUPANCY CLASS:	G1			OFFICES
1.3 POPULATION:	1/ 15	m <sup>2</sup>	= 3	NUMBER OF PEOPLE
1.4 ROUTES OF ESCAPE required:			2	2-OFF 1033mm WIDE
2 FIRE PROTECTION EQUIPMENT				
2.1 FIRE HYDRANT:	1/ 1000	m <sup>2</sup>	= 0	REQUIRED, 90 METERS APART
2.2 FIRE HOSE REEL:	1/ 500	m <sup>2</sup>	= 0	REQUIRED, WITH 30 METER LONG HOSES
2.3 EXTINGUISHERS:	1/ 200	m <sup>2</sup>	= 0	1-OFF 4,5kg DCP TYPE PROVIDED
2.4 SPRINKLER PROTECTION:	YES			REQUIRED, IN ACCORDANCE WITH ASIB REGULATIONS
3 RELATED SERVICES				
3.1 FIRE DETECTION:	YES			REQUIRED, CATEGORY L1 IN ACCORDANCE WITH SANS 10139:2021
3.2 SMOKE VENTILATION:	NO			NOT REQUIRED, AREA LESS THAN 500m <sup>2</sup>

ISSUE DATE:	2023-09-04	REVISION:	A
X	FOR INFORMATION		
	FOR APPROVAL		
	FOR TENDER		
	FOR CONSTRUCTION		
	AS-BUILT		



PROPOSED FIRE SERVICE LAYOUT (Scale 1:100)



FIRE SIGNS & EQUIPMENT COUNT						
SYMBOL	EXIT	F13	F31	F45	EXT	BGU
REFERENCE	E6	F13	F31	F45	EXT	BGU
QUANTITY	2	1	2	2	1	2

FIRE INSTALLATION NOTES	
<b>GENERAL</b>	
-ALL PRIMARY CO-ORDINATION TO BE THE RESPONSIBILITY OF THE PRINCIPLE AGENT.	
-ALL VERTICAL OPENINGS AND SERVICE SHAFTS BETWEEN FLOORS SHALL BE FIRE STOPPED (2 HOURS).	
-THE LIFT SHAFT IS TO BE POSITIVELY PRESSURISED ON FIRE CONDITIONS.	
-HAND HELD FIRE EXTINGUISHERS AND HYDRANTS ARE TO BE PROVIDED AS INDICATED ON THE RELEVANT PLAN DRAWINGS.	
<b>PORTABLE FIRE EXTINGUISHERS</b>	
FIRE EXTINGUISHERS SHALL BE 4.5kg AND 9kg DRY CHEMICAL POWDER TYPE AND SHALL COMPLY WITH SABS 810.	
ALL FIRE EXTINGUISHERS SHALL BE MOUNTED ON WOODEN BACKING BOARDS.	
<b>SYMBOLIC SAFETY SIGNAGE</b>	
SYMBOLIC SAFETY SIGNAGE SHALL COMPLY WITH SABS 1186 PART V AND SHALL BE OF THE PHOTOLUMINESCENT TYPE.	
SIGNAGE SHALL BE INSTALLED SUCH AS TO CLEARLY INDICATE THE POSITIONS OF ALL FIRE EQUIPMENT AND ESCAPE ROUTES.	
EACH FLOOR LEVEL SHALL BE NUMBERED IN THE ESCAPE STAIRS.	
SIGNAGE ON DRAWING IS AN INDICATION OF SIGNAGE REQUIRED.	
FINAL SIGNAGE TO BE DETERMINED ON SITE.	
ADDITIONAL SIGNAGE TO BE ADDED SHOULD IT BE REQUESTED BY THE LOCAL AUTHORITIES.	
FINAL FIRE SIGNAGE IS TO BE DETERMINED ON SITE WITH THE COUNCIL'S FIRE OFFICER.	
<b>FIRE ALARM / DETECTION</b>	
FIRE DETECTION AND ALARM SYSTEM SHALL BE INSTALLED AS INDICATED ON THE DRAWINGS AND IN ACCORDANCE WITH SANS 10139.	
<b>EMERGENCY POWER</b>	
THE FOLLOWING SHALL BE SUPPLIED WITH AN EMERGENCY POWER SUPPLY FOR 60 MINUTES:	
-EMERGENCY LIGHTING	
-FIRE DETECTION & ALARM SYSTEM	
-PRESSURIZATION OR SMOKE EXTRACT FANS	
<b>FIRE ESCAPE ROUTES</b>	
FIRE ESCAPE ROUTES, INCLUDING CORRIDORS AND STAIRWAYS SHALL HAVE MINIMUM WIDTH OF 1500mm UNLESS SHOWN OTHERWISE.	
ALL ESCAPE ROUTES SHALL HAVE A FIRE RESISTANCE AS INDICATED.	
ALL EMERGENCY ROUTES SHALL HAVE A FIRE RESISTANCE AS INDICATED ON THE DRAWINGS.	

FIRE SERVICES LEGEND	
	4.5kg DCP FIRE EXTINGUISHER
	BREAK GLASS UNIT
	DIRECTIONAL ARROW

SCOPE OF WORKS CLARIFICATION	
<b>A. FIRE CONTRACTOR</b>	
1. SUPPLY & INSTALL 7-OFF NEW FIRE SIGNAGE AS INDICATED ON PLAN.	
2. SUPPLY & INSTALL 1-OFF NEW FIRE EXTINGUISHER.	
<b>B. ELECTRICAL CONTRACTOR</b>	
1. SUPPLY AND INSTALL EMERGENCY LIGHTING THROUGHOUT THE SPACE AS SHOWN ON PLAN, c/w BATTERY BACKUP.	
<b>C. BUILDER</b>	
1. FIRE SEALING OF ALL PENETRATIONS THROUGH FIRE RATED WALLS.	
2. PROVIDING PENETRATIONS THROUGH CEILINGS AND WALLS AND MAKING GOOD THEREOF.	
3. FIRE SEAL SERVICE PENETRATION IN FIRE WALL.	

FIRE DESIGN CONFIRMATION	
DEEMED TO SATISFY WITH SANS 10400	YES
RATIONAL ASSESSMENT	N/A
RATIONAL DESIGN EQUIVALENT OR SUPERIOR TO SANS 10400	N/A

REVISIONS				
No	Date	Description	Rev By	Ckd By
A	09/04/2023	ISSUED FOR INFORMATION	N.H	H.R

		09 Plantanus Street Kuilsriver 7580	
CONSULTMECH Mechanical Engineers		Cell.: (072) 948 4470 Tel.: (021) 903 1407 Email: info@consultmech.co.za	
PROJECT NO	21B09	STAGE	01 02 03 04 05 06
PROJECT	LEHAE LA SARS - BLOCK J		
	BROOKLYN		
DWG TITLE	GROUND STOREY - PROPOSED		
	FIRE SERVICES LAYOUT		
DWG NUMBER	F-511-01	REV.	A
PRACTITIONER	H.D ROUX	SCALE	1:100 @ A3
REVIEWED BY	H.D ROUX	ECSA NUMBER	201070151
APPROVED BY	H.D ROUX	ECSA NUMBER	201070151
COPYRIGHT AND RIGHT OF REPRODUCTION OF THIS DRAWING OR ANY PORTION THEREOF IS RESERVED BY THE ENGINEERS			
SIGNATURES			
NAME	PRACTICE	REG NO	SIGNATURE
Client	X	N/A	
Fire Services	ConsultMech Mechanical Engineers	201070151	