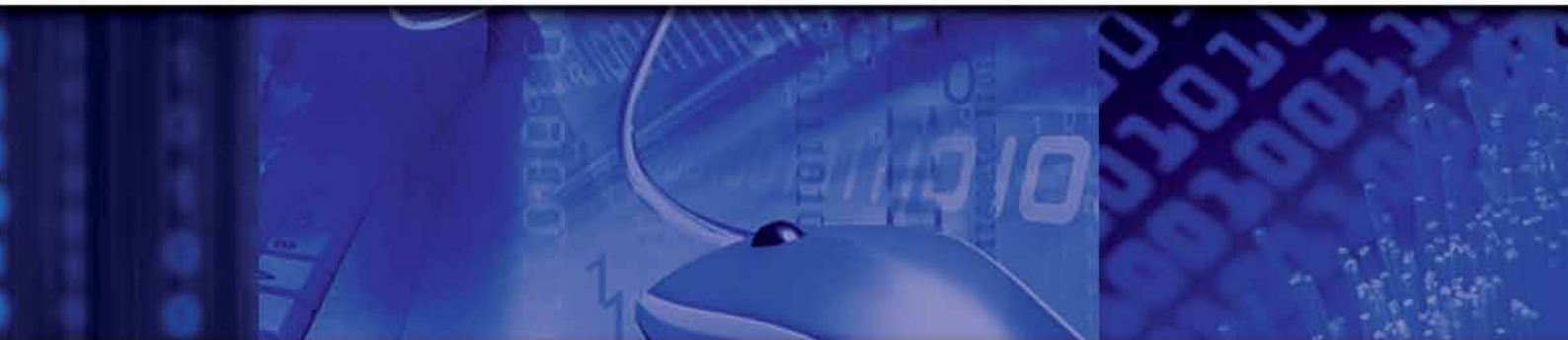


DIRECT DATA FLOW CHANNEL (SECURE FILE TRANSFER)/ IBM® CONNECT:DIRECT® GUIDE



1. PURPOSE

The purpose of this guide is to assist organisations to configure the IBM® Sterling Connect:Direct® software for easy, secure file transfer.

2. SCOPE

This guide explains:

- ◆ Why SARS is introducing this new interface
- ◆ The IBM® Sterling Connect:Direct® solution
- ◆ How to add a new remote node (netmap) to your Connect:Direct®

3. BACKGROUND: WHY SARS IS INTRODUCING A NEW INTERFACE

SARS is introducing an additional interface for submission and transfer of 3rd party data files by using the IBM® Sterling Connect:Direct® solution, to provide a secure solution for point-to-point file transfers. Connect: Direct® is the standard used primarily among the banking community and larger organisations specifically for the secure transfer of large files.

Organisations will be able to login to eFiling to activate the Direct Data Flow Channel and monitor the file submission. Data validations will be performed to ensure correctness and completeness. The ability to rectify any omissions or errors on the detailed data will be provided. It will reduce the overall administrative burden of data transfer and shorten data processing times. This platform will provide faster feedback on file submissions.

Organisations wishing to use Connect:Direct® must purchase the technology. Visit the IBM websites www.ibm.com or www.trustlink.com. Alternatively, the other channels available on the SARS 3rd Party Data Platform can be used for submitting the relevant data types.

4. IBM® STERLING CONNECT:DIRECT®

At a time when information security is constantly under threat, it is vital to provide a channel for secure point-to-point file transfers. IBM® Sterling Connect:Direct® provides a near real-time solution for reliable, secure file transfer.

It has been optimised for high-volume, assured data delivery of files within and between entities and allows organisations to automate the data exchange between mission-critical applications regardless of platform.

IBM® Sterling Connect:Direct® further eliminates the need for manual intervention in data delivery, improving productivity and the reliability of business processes. It allows the transfer of high volumes and large files with no limits on file sizes and is reliable at all times. It provides built-in automation and checkpoint restart to ensure delivery.

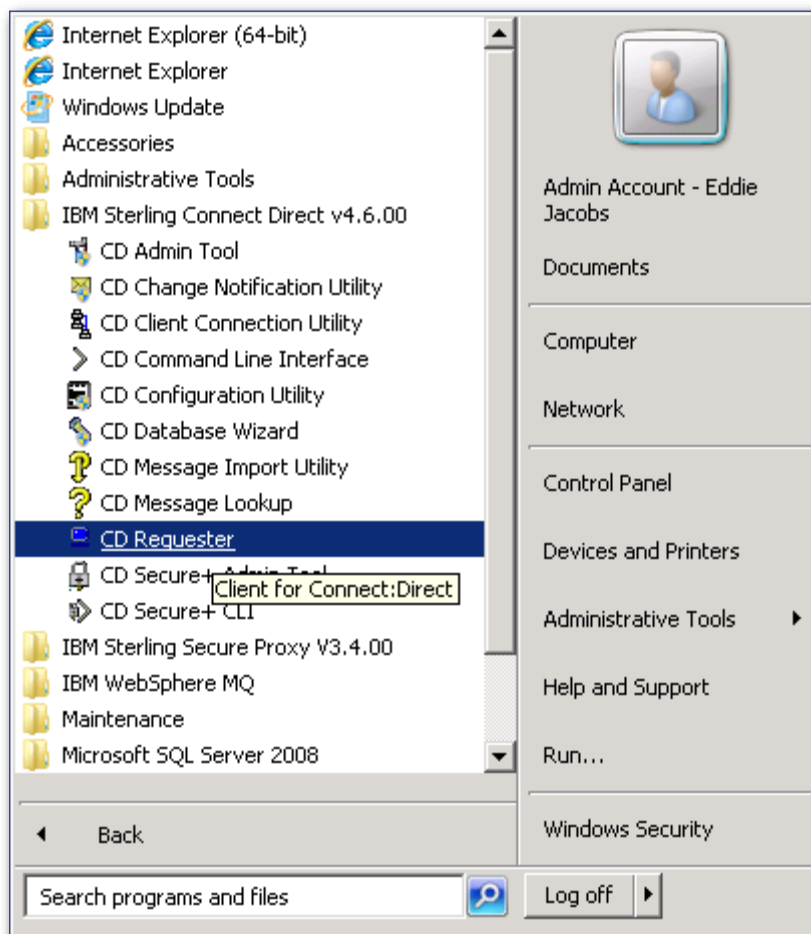
4.1. Benefits of IBM® Sterling Connect:Direct®

- ◆ Improved productivity
- ◆ No limits on file sizes
 - » assigns and manages file transfer workload
- ◆ Reliable file delivery
 - » supports checkpoint restart
 - » automatic recovery from network interruptions
 - » automated alert notifications for success/failure

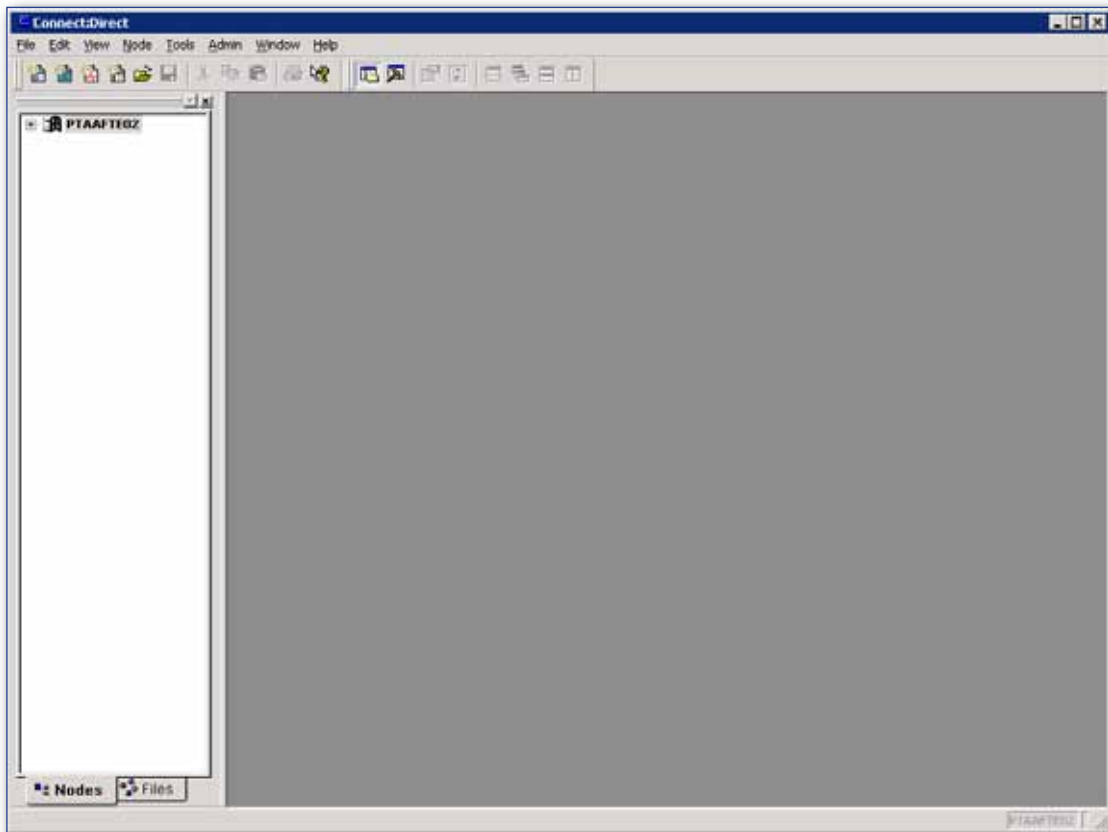
- ◆ Security and compliance
 - » Standard IBM® Sterling Connect:Direct® interfaces with operating system security for user authentication
 - » provides a complete audit trail of data movement through extensive statistics logs
- ◆ Existing infrastructure can be leveraged
- ◆ Files may be moved with confidence

5. HOW TO ADD A NEW REMOTE NODE (NETMAP) TO YOUR IBM® STERLING CONNECT:DIRECT®

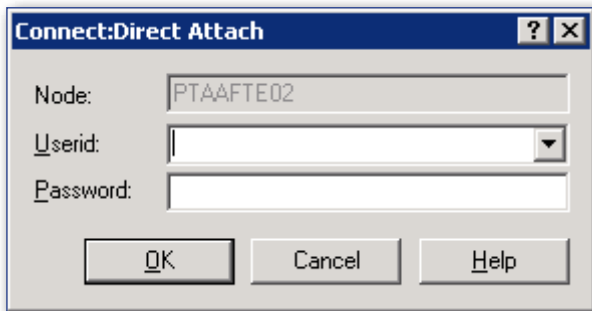
Open the “IBM® Sterling Connect:Direct® \ CD Requester” application



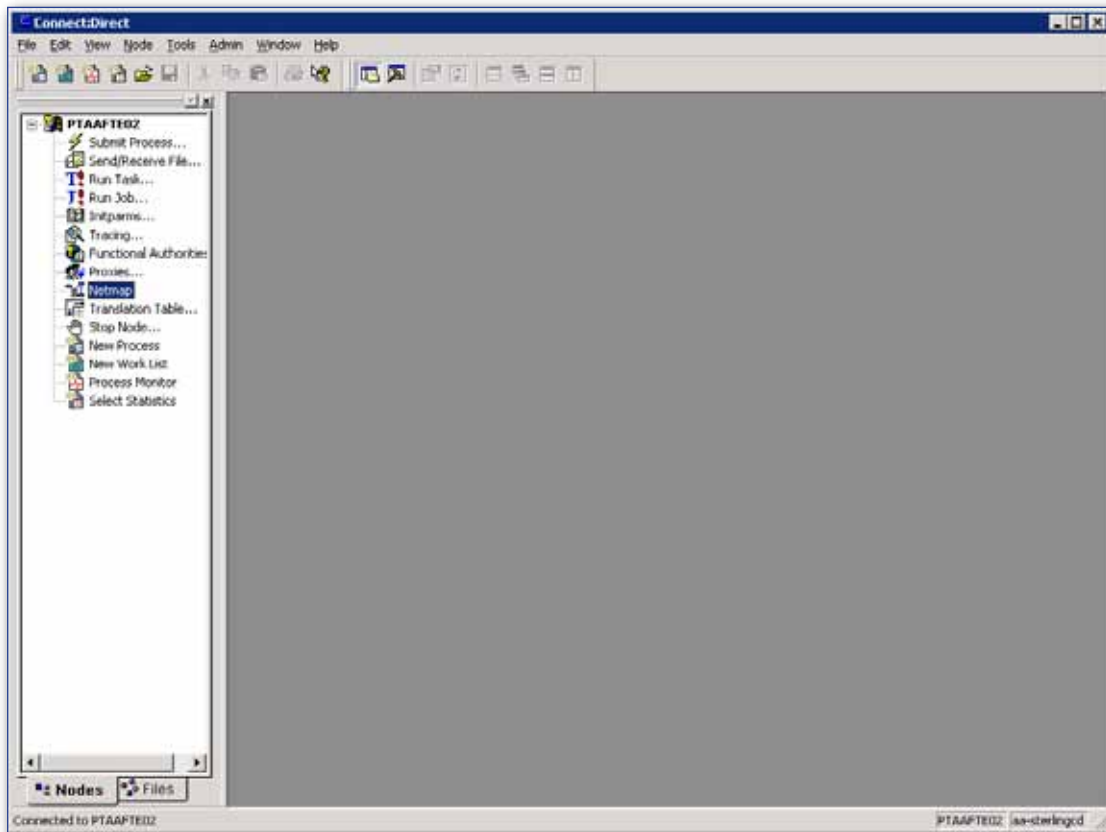
On the opened form, right click and select **"Attach..."** on the node to be configured.



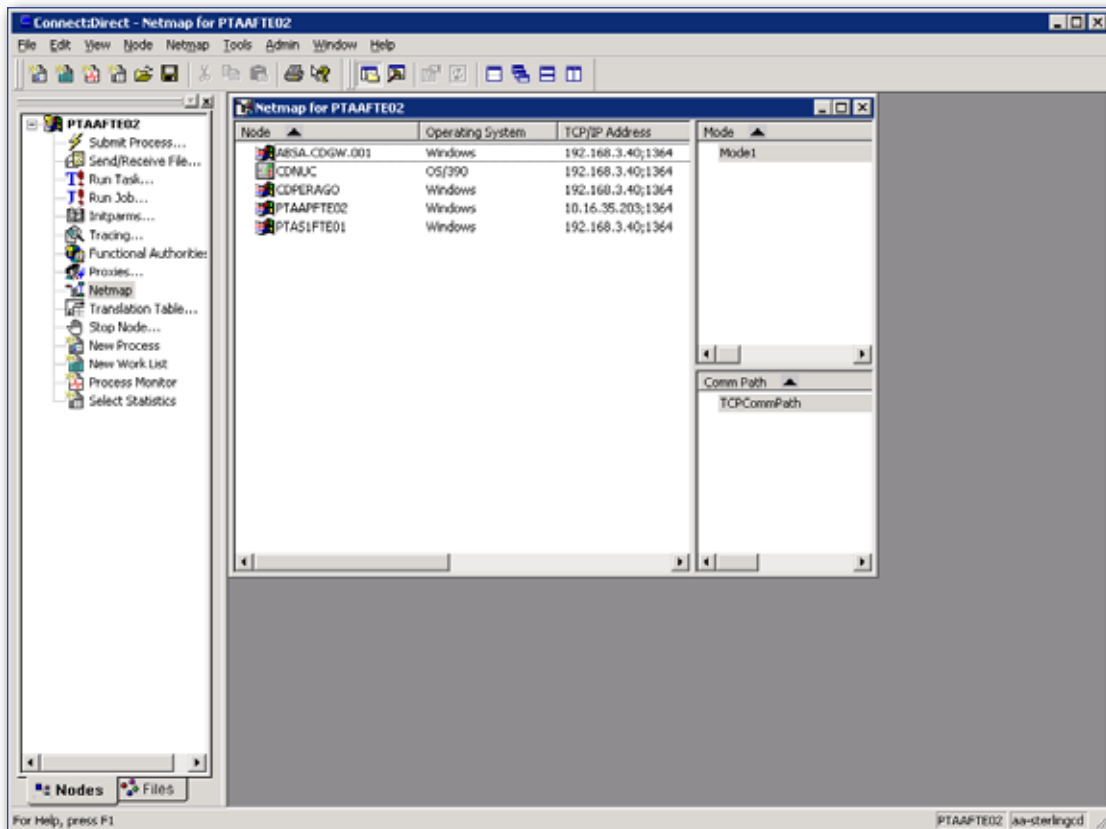
Enter a valid user ID and password for your node



Double click on "Netmap"



A screen with the currently configured netmaps will open



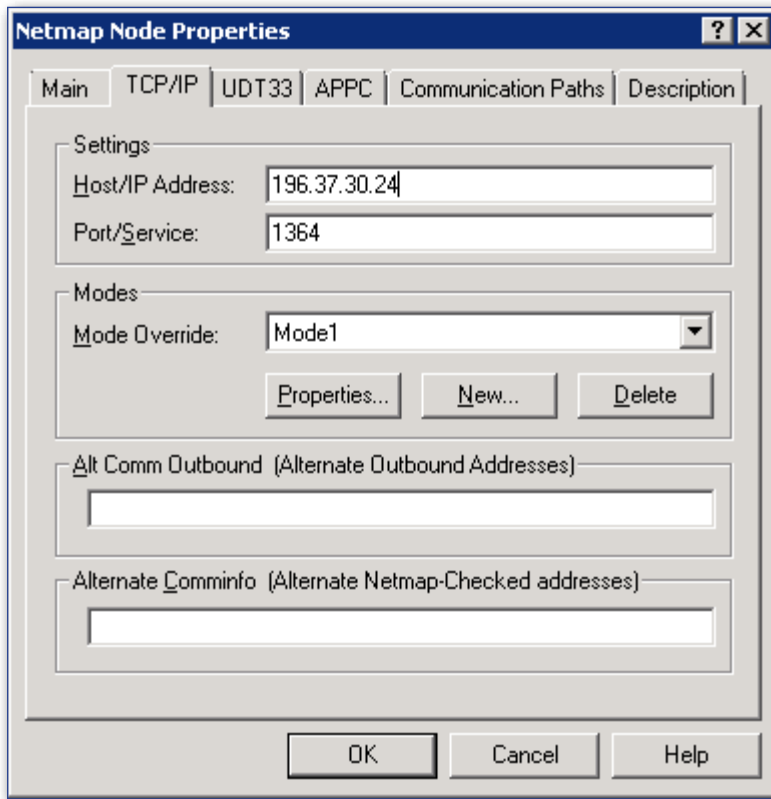
Right click on an open space on the “Netmap for <Your node name>” form and select “Insert...”. The following window opens:

The screenshot shows the "Netmap Node Properties" dialog box with the "Main" tab selected. The "Node" section contains a "Name" field and an "Operating System" dropdown menu set to "OpenVMS". The "Options" section has three input fields: "Max Pnode Sess" (1), "Max Snode Sess" (1), and "Default Class" (1). The "Retry Settings" section has two rows: "Short Term" with "Attempts" (10) and "Interval" (00:00:10), and "Long Term" with "Attempts" (10) and "Interval" (00:03:00). At the bottom are "OK", "Cancel", and "Help" buttons.

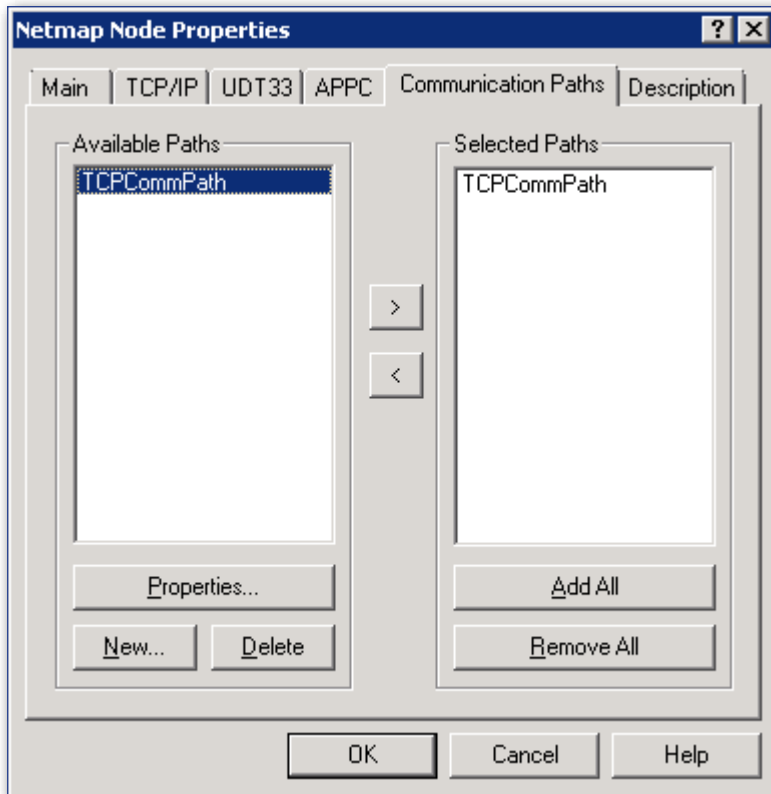
On the **Main** tab, fill in the “Name” and “Operating System” fields

This screenshot shows the same "Netmap Node Properties" dialog box, but with the "Name" field filled with "PTAAPFTE02" and the "Operating System" dropdown menu set to "Windows". All other fields and buttons remain the same as in the previous screenshot.

On the **TCP/IP** tab fill in the **Host/IP Address**, **Port/Service** and **Mode Override** fields



On the **Communication Paths** tab select "**TCPCommPath**"



Press the **"OK"** button to accept the new values.

You will be taken back to the Netmap window and your new entry will have a green plus sign (+) next to it.

Right click on your new entry and select **"Apply..."**

Your new node is now added.

Provide SARS with the Public IP and port for your IBM® Connect:Direct® server as well as the operating system it is installed on to allow SARS to complete the configuration. The details must be emailed to datachannel@sars.gov.za
On receipt SARS will contact you to set up the connection.

6. FURTHER INFORMATION

For more information on acquiring the IBM® Sterling Connect:Direct® software or on the process of submitting your files using the modernised 3rd Party Data Platform, visit the SARS website www.sars.gov.za