



## Message Implementation Guideline

# COSTCO

based on

## COSTCO

Container stuffing/stripping confirmation message

### UN D.16A S4

Version: 1  
Variant: 3  
Issue date: 2017/11/23  
Author: SARS EDI

#### Change Log:

- 1.2.a - UNH change EDIFACT directory from D.16B to D.16A
  - 1.2.b - ESTIMATED DATE OF DEPARTURE change qualifier from 133 to 132
  - 1.2.c - IMPORT/EXPORT/ TRANSHIPMENT INDICATOR example corrected to valid code
  - 1.2.d - Gross Weight Found qualifier in example corrected to ACE
  - 1.2.e - Gross Litres 6321 changed to ABJ (example amended)
  - 1.2.f - Gross Litres Found 6321 changed to BRF (example amended)
  - 1.2.g - FTX+AEC changed example to remove value for 4453
  - 1.2.h - TOTAL NUMBER OF PACKAGES/CONTAINERS FOUND changed to TOTAL NUMBER OF PACKAGES
  - 1.2.i - DATE / TIME FULLY UNLOADED made "O" on Container level (SG6)
  - 1.3.a - DATE / TIME FULLY UNLOADED / LOADED AOR - status "M" added
  - 1.3.b - PRINCIPAL CARRIER CONVEYANCE NUMBER format changed from "an..70" to "an..17"
  - 1.3.c - DATE/TIME UNPACKED / DECONSOLIDATED AOR status "M" removed
-

- 
- 1.3.d - DATE/TIME UNPACKED / DECONSOLIDATED DOR, VOR and EOR status changed from "M" to "C"
  - 1.3.e - DATE / TIME FULLY UNLOADED format changed from "an..35" to "n..12"
  - 1.3.f - SEALING PARTY-1 VOR - status "O" added
  - 1.3.g - SEALING PARTY duplicate code values removed.
  - 1.3.h - SEAL STATUS VOR status changed from "C" to "O"
  - 1.3.i - LRN EXIT format changed from "an..70" to "an..35"
  - 1.3.j - EXPORT PROCEDURE DOR, BBB and AOR status changed from "C" to "O"
  - 1.3.k - EXPORT PROCEDURE format changed from "an..9" to "an..5"
  - 1.3.l - CONTENTS FOUND TO BE ALD status "C" removed
  - 1.3.m - CONTENTS SHOULD BE ALD status "C" removed
  - 1.3.n - DESCRIPTION OF GOODS format changed from "an..512" to "an..350"
  - 1.3.o - CONSOLIDATION INDICATOR DOR and BBB staus changed from "M" to "O"
  - 1.3.p - SEAL STATUS DOR, VOR and EOR changed to "C"

1 Message Structure.....	3
2 Branching Diagram .....	5
3 Segments .....	9

**Structure / Table of Contents**

Counter	No	Tag	St	MaxOcc	Level	Content
0000	1	<b>UNB</b>	M	1	0	Interchange header
0010	2	<b>UNH</b>	M	1	0	Message header
0020	3	<b>BGM</b>	M	1	0	Beginning of message
0030	4	<b>DTM</b>	M	1	1	DOCUMENT DATE/TIME
0030	5	<b>DTM</b>	M	1	1	ACTUAL ARRIVAL DATE
0030	6	<b>DTM</b>	C	1	1	ESTIMATED DATE OF DEPARTURE
0030	7	<b>DTM</b>	C	9	1	DATE / TIME FULLY UNLOADED / LOADED
0040	8	<b>FTX</b>	C	9	1	EXCESS INDICATOR
0040	9	<b>FTX</b>	C	9	1	IMPORT/EXPORT/ TRANSHIPMENT INDICATOR
0050		<b>SG1</b>	C	9	1	RFF
0060	10	<b>RFF</b>	M	1	1	DOCUMENT TO BE AMENDED
0080		<b>SG2</b>	M	1	1	TDT-RFF-RFF-SG3
0090	11	<b>TDT</b>	M	1	1	Transport information
0110	12	<b>RFF</b>	C	9	2	MANIFEST TYPE
0110	13	<b>RFF</b>	C	9	2	PRINCIPAL CARRIER CONVEYANCE NUMBER
0120		<b>SG3</b>	C	9	2	LOC
0130	14	<b>LOC</b>	M	1	2	PLACE / PORT OF DISCHARGE
0150		<b>SG4</b>	M	1	1	MESSAGE SENDER
0160	15	<b>NAD</b>	M	1	1	MESSAGE SENDER
0150		<b>SG4</b>	M	9	1	OUTTURN PROVIDER CODE
0160	16	<b>NAD</b>	M	1	1	OUTTURN PROVIDER CODE
0200		<b>SG6</b>	M	999	1	EQD-DTM-DTM-SEL
0210	17	<b>EQD</b>	M	1	1	Equipment details
0230	18	<b>DTM</b>	C	9	2	DATE/TIME UNPACKED / DECONSOLIDATED
0230	19	<b>DTM</b>	C	9	2	DATE / TIME FULLY UNLOADED
0260	20	<b>SEL</b>	M	4	2	Seal number
0400		<b>SG10</b>	M	999	1	CNI-RFF-RFF-RFF-RFF-RFF-RFF-SG11
0410	21	<b>CNI</b>	M	1	1	Consignment information
0420	22	<b>RFF</b>	C	9	2	CARGO CARRIER CODE
0420	23	<b>RFF</b>	C	9	2	EXTERNAL REFERENCE
0420	24	<b>RFF</b>	C	9	2	MASTER CARGO CARRIER CODE
0420	25	<b>RFF</b>	C	9	2	MASTER TRANSPORT DOCUMENT NUMBER
0420	26	<b>RFF</b>	C	9	2	PARENT TRANSPORT DOCUMENT NUMBER
0420	27	<b>RFF</b>	C	9	2	LRN EXIT
0430		<b>SG11</b>	C	999	2	GID-FTX-FTX-FTX-FTX-MEA-MEA-MEA-MEA-PCI-SG13-SG14
0440	28	<b>GID</b>	M	1	2	Goods item details
0490	29	<b>FTX</b>	C	9	3	Condition
0490	30	<b>FTX</b>	C	9	3	Contents Found

Counter = Counter of segment/group within the standard  
 No = Consecutive segment number  
 MaxOcc = Maximum occurrence of the segment/group

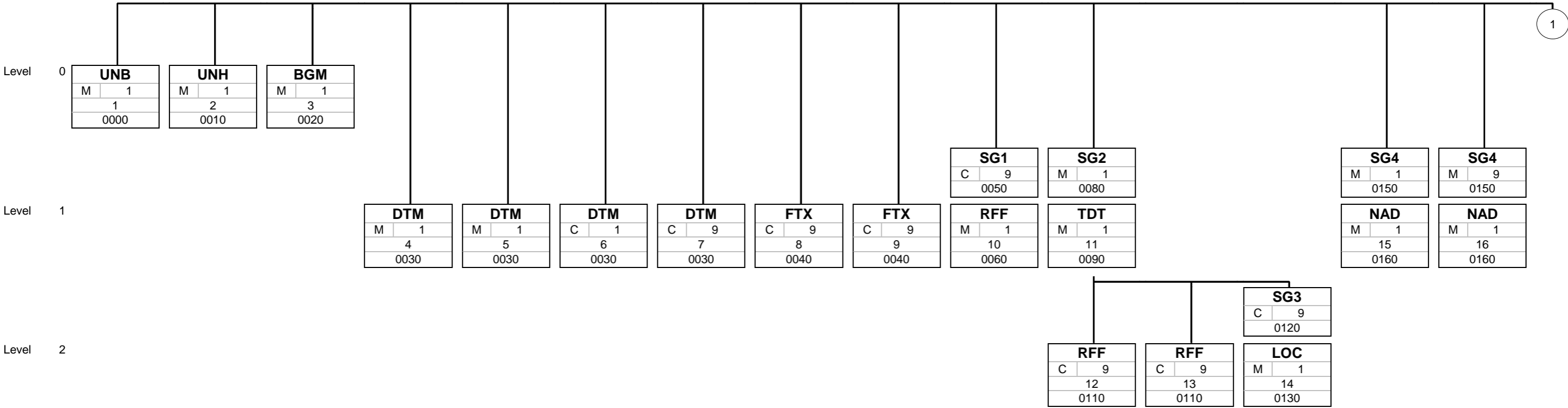
St = Status  
 EDIFACT: M=Mandatory, C=Conditional  
 User specific: R=Required, O=Optional, D=Dependent,  
 A=Advised, N=Not used

Counter	No	Tag	St	MaxOcc	Level	Content
0490	31	<b>FTX</b>	C	9	3	Contents Should be
0490	32	<b>FTX</b>	C	9	3	DESCRIPTION OF GOODS
0500	33	<b>MEA</b>	C	9	3	Gross Weight
0500	34	<b>MEA</b>	C	9	3	Gross Weight Found
0500	35	<b>MEA</b>	C	9	3	Gross Litres
0500	36	<b>MEA</b>	C	9	3	Gross Litres Found
0510	37	<b>PCI</b>	C	9	3	Package identification
0530		<b>SG13</b>	M	999	3	SGP
0540	38	<b>SGP</b>	M	1	3	Split goods placement
0560		<b>SG14</b>	C	99	3	DGS
0570	39	<b>DGS</b>	M	1	3	Dangerous goods
0660	40	<b>CNT</b>	C	1	0	Control total
0670	41	<b>UNT</b>	M	1	0	Message trailer
0000	42	<b>UNZ</b>	M	1	0	Interchange trailer

Counter = Counter of segment/group within the standard  
 No = Consecutive segment number  
 MaxOcc = Maximum occurrence of the segment/group

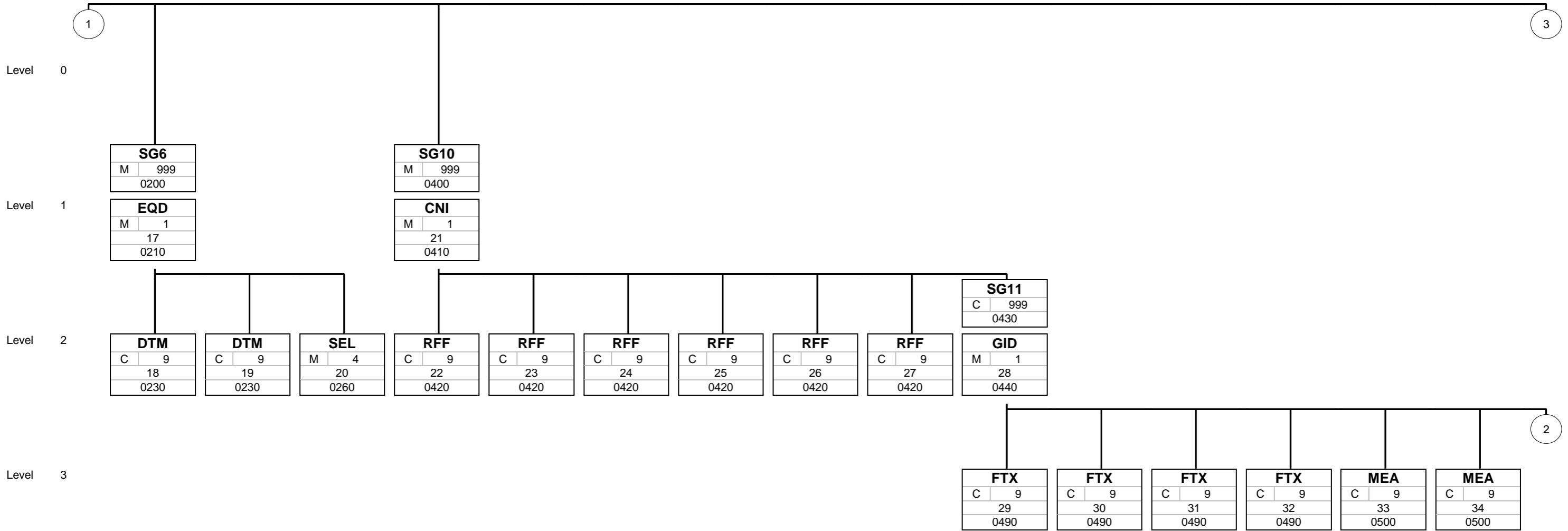
St = Status  
 EDIFACT: M=Mandatory, C=Conditional  
 User specific: R=Required, O=Optional, D=Dependent,  
 A=Advised, N=Not used

**Branching Diagram of Used Segments/Groups**



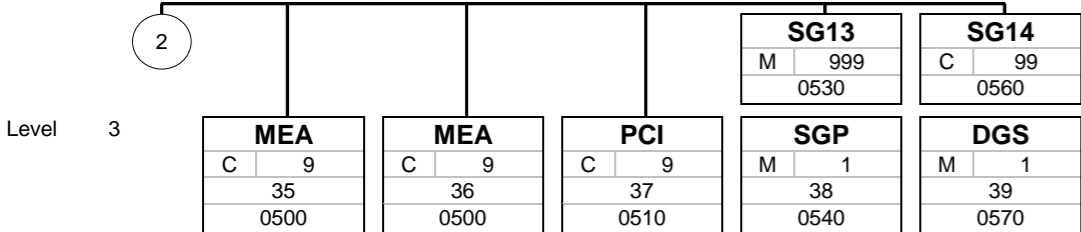
Tag
St MaxOcc
No
Counter

Tag = Segment/Group Tag  
 St = Status (M=Mandatory, C=Conditional, R=Required, O=Optional, A=Advised, D=Dependent)  
 MaxOcc = Maximum occurrence of the segment/group  
 No = Consecutive segment number  
 Counter = Counter of segment/group within the standard



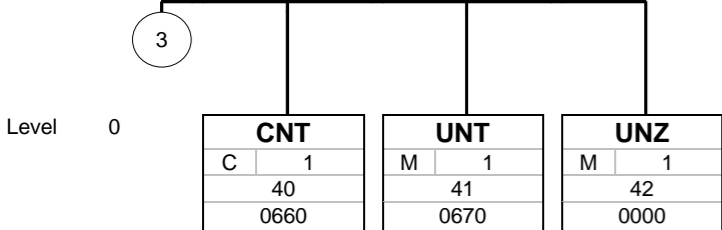
Tag
St MaxOcc
No
Counter

Tag = Segment/Group Tag  
 St = Status (M=Mandatory, C=Conditional, R=Required, O=Optional, A=Advised, D=Dependent)  
 MaxOcc = Maximum occurrence of the segment/group  
 No = Consecutive segment number  
 Counter = Counter of segment/group within the standard



Tag
St MaxOcc
No
Counter

Tag = Segment/Group Tag  
 St = Status (M=Mandatory, C=Conditional, R=Required, O=Optional, A=Advised, D=Dependent)  
 MaxOcc = Maximum occurrence of the segment/group  
 No = Consecutive segment number  
 Counter = Counter of segment/group within the standard



Tag
St MaxOcc
No
Counter

Tag = Segment/Group Tag  
 St = Status (M=Mandatory, C=Conditional, R=Required, O=Optional, A=Advised, D=Dependent)  
 MaxOcc = Maximum occurrence of the segment/group  
 No = Consecutive segment number  
 Counter = Counter of segment/group within the standard



Segments

Counter No	Tag	St	MaxOcc	Level	Name	
0000	1	<b>UNB</b>	M	1	0	Interchange header

		Standard	Implementation								
Tag	Name	St Format	St Format	Usage / Remark	DOR	BBB	VOR	AOR	EOR	ALD	Business Rules
UNB											
S001	Syntax identifier	M	M								
0001	Syntax identifier	M a4	M a4	<b>UNOB = UN/ECE level B</b>	M	M	M	M	M	M	
0002	Syntax version number	M an1	M an1	<b>4 = Version 4</b>	M	M	M	M	M	M	
0080	Service code list directory version number	C an..6	N	Not used							
0133	Character encoding, coded	C an..3	N	Not used							
0076	Syntax release number	C an2	N	Not used							
S002	Interchange sender	M	M								
0004	Interchange sender identification	M an..35	M an..35	<b>SARS assigned EDI Profile Code including dual code (if applicable)</b>	M	M	M	M	M	M	
0007	Identification code qualifier	C an..4	N	Not used							
0008	Interchange sender internal identification	C an..35	C an..35	<b>Authentication code provided by SARS for EDI profile</b>	M	M	M	M	M	M	
0042	Interchange sender internal sub-identification	C an..35	C an..35								
S003	Interchange recipient	M	M								
0010	Interchange recipient identification	M an..35	M an..35	<b>SARSCAR = RCG Production System SARSCART = RCG Test System</b>	M	M	M	M	M	M	
0007	Identification code qualifier	C an..4	N	Not used							
0014	Interchange recipient internal identification	C an..35	N	Not used							
0046	Interchange recipient internal sub-identification	C an..35	N	Not used							
S004	Date and time of preparation	M	M								
0017	Date	M n8	M n8		M	M	M	M	M	M	
0019	Time	M n4	M n4		M	M	M	M	M	M	
0020	Interchange control reference	M an..14	M an..14		M	M	M	M	M	M	
S005	Recipient reference/password details	C	C								
0022	Recipient reference/password	M an..14	N	Not used							
0025	Recipient reference/password qualifier	C an2	N	Not used							
0026	Application reference	C an..14	C an..14								
0029	Processing priority code	C a1	C a1								
0031	Acknowledgement request	C n1	C n1	<b>1 = Acknowledgement requested</b>	O	O	O	O	O	O	
0032	Interchange agreement identifier	C an..35	C an..35	<b>Required for X.400</b>	C	C	C	C	C	C	
0035	Test indicator	C n1	C n1	<b>Required for Test 1 = Interchange is a test</b>	C	C	C	C	C	C	

Remark:

Example:

UNB+UNOB:4+12345678ABC::ABCDEFGHIJKLMNOPS:SPCAS2+SARSCAR+20170724:1341+1234567890++COSTCO+A+1+X400  
Mailbox+1'

No = Consecutive segment number  
MaxOcc = Maximum occurrence of the segment/group  
Counter = Counter of segment/group within the standard  
St = Status  
EDIFACT: M=Mandatory, C=Conditional  
User specific: M=Mandatory, O=Optional, C=Conditional

Counter No	Tag	St	MaxOcc	Level	Name	
0010	2	<b>UNH</b>	M	1	0	Message header

Tag	Name	Standard St Format	Implementation St Format	Usage / Remark	DOR	BBB	VOR	AOR	EOR	ALD	Business Rules
UNH											
0062	Message reference number	M an..14	M an..14		M	M	M	M	M	M	
S009	Message identifier	M	M								
0065	Message type	M an..6	M an..6	<b>COSTCO</b> = Container stuffing/stripping confirmation message	M	M	M	M	M	M	
0052	Message version number	M an..3	M an..3	<b>D</b> = Draft version/UN/EDIFACT Directory	M	M	M	M	M	M	
0054	Message release number	M an..3	M an..3	<b>16A</b> = Release 2016 - A	M	M	M	M	M	M	
0051	Controlling agency, coded	M an..3	M an..3	<b>UN</b> = UN/CEFACT	M	M	M	M	M	M	
0057	Association assigned code	C an..6	C an..6	<b>RCG001</b> = SARS RCG Version 1	M	M	M	M	M	M	
0110	Code list directory version number	C an..6	N	Not used							
0113	Message type sub-function identification	C an..6	N	Not used							
0068	Common access reference	C an..35	N	Not used							
S010	Status of the transfer	C	N	Not used							
0070	Sequence of transfers	M n..2	N	Not used							
0073	First and last transfer	C a1	N	Not used							
S016	Message subset identification	C	N	Not used							
0115	Message subset identification	M an..14	N	Not used							
0116	Message subset version number	C an..3	N	Not used							
0118	Message subset release number	C an..3	N	Not used							
0051	Controlling agency, coded	C an..3	N	Not used							
S017	Message implementation guideline identification	C	N	Not used							
0121	Message implementation guideline identification	M an..14	N	Not used							
0122	Message implementation guideline version number	C an..3	N	Not used							
0124	Message implementation guideline release number	C an..3	N	Not used							
0051	Controlling agency, coded	C an..3	N	Not used							
S018	Scenario identification	C	N	Not used							
0127	Scenario identification	M an..14	N	Not used							
0128	Scenario version number	C an..3	N	Not used							
0130	Scenario release number	C an..3	N	Not used							
0051	Controlling agency, coded	C an..3	N	Not used							

Remark:

Example:

UNH+1212121212+COSTCO:D:16A:UN:RCG001'

No = Consecutive segment number  
 MaxOcc = Maximum occurrence of the segment/group  
 Counter = Counter of segment/group within the standard

St = Status  
 EDIFACT: M=Mandatory, C=Conditional  
 User specific: M=Mandatory, O=Optional, C=Conditional

Counter No	Tag	St	MaxOcc	Level	Name	
0020	3	<b>BGM</b>	M	1	0	Beginning of message

		Standard	Implementation		DOR	BBB	VOR	AOR	EOR	ALD	Business Rules
Tag	Name	St Format	St Format	Usage / Remark							
BGM											
C002	Document/message name	C	C								
1001	Document name code	C an..3	M an..3	<b>788 = Container manifest (unit packing list)</b>	M	M	M	M	M	M	
1131	Code list identification code	C an..17	N	Not used							
3055	Code list responsible agency code	C an..3	N	Not used							
1000	Document name	C an..35	C an..3	<b>DOCUMENT TYPE</b> DOR = Depot Cargo Outturn Report BBB = Bulk/Break Bulk/Cargo Outturn Report VOR = Vessel Outturn Report AOR = Air Cargo Outturn Report EOR = Air Excess Outturn Report ALD = Air Load/Discharge	M	M	M	M	M	M	DOR to be submitted by licensee of container depot on completion of container pack/unpack. One COSTCO DOR per container. BBB to be submitted by Break Bulk/Bulk Terminal Operator at prescribed intervals for cargo load/discharge. VOR to be submitted by licensee of a terminal or depot on completion of a unload/load, pack/unpack to report unmanifested excess cargo against a vessel. One COSTCO VOR per container. AOR to be submitted by licensee of air cargo depot on completion of cargo pack/unpack. EOR to be submitted by licensee of an air cargo depot on completion of cargo pack/unpack. ALD to be submitted by air cargo terminal operators on completion of cargo loaded/un-loaded from aircraft.
C106	Document/message identification	C	C								
1004	Document identifier	C an..70	M an..35	<b>DOCUMENT NUMBER</b> A unique reference number assigned to the electronic document.	M	M	M	M	M	M	
1056	Version identifier	C an..9	N	Not used							
1060	Revision identifier	C an..6	N	Not used							
1225	Message function code	C an..3	C an..3	<b>MESSAGE FUNCTION</b> 4 = Change [If a document is amended, the reference number of the original message must be supplied within DOCUMENT TO BE AMENDED / CANCELLED] 1 = Cancellation [If a document is cancelled, the reference number of the original message must be supplied within DOCUMENT TO BE AMENDED / CANCELLED] 9 = Original 4 = Change 1 = Cancellation	M	M	M	M	M	M	
4343	Response type code	C an..3	N	Not used							
1373	Document status code	C an..3	N	Not used							
3453	Language name code	C an..3	N	Not used							

Remark:

Example:

BGM+788:::DOR+123456789+9'

No = Consecutive segment number  
 MaxOcc = Maximum occurrence of the segment/group  
 Counter = Counter of segment/group within the standard  
 St = Status  
 EDIFACT: M=Mandatory, C=Conditional  
 User specific: M=Mandatory, O=Optional, C=Conditional

Counter No	Tag	St	MaxOcc	Level	Name
------------	-----	----	--------	-------	------

0030 4 **DTM** M 1 1 DOCUMENT DATE/TIME

		Standard	Implementation		DOR	BBB	VOR	AOR	EOR	ALD	Business Rules
Tag	Name	St Format	St Format	Usage / Remark							
DTM											
C507	Date/time/period	M	M								
2005	Date or time or period function code qualifier	M an..3	M an..3	137 = Document issue date time							
2380	Date or time or period text	C an..35	C an..35	DOCUMENT DATE/TIME	M	M	M	M	M	M	
2379	Date or time or period format code	C an..3	C an..3	203 = CCYYMMDDHHMM							

**Remark:**

**Example:**  
DTM+137:201708231454:203'

No = Consecutive segment number  
 MaxOcc = Maximum occurrence of the segment/group  
 Counter = Counter of segment/group within the standard  
 St = Status  
 EDIFACT: M=Mandatory, C=Conditional  
 User specific: M=Mandatory, O=Optional, C=Conditional

Counter No	Tag	St	MaxOcc	Level	Name
------------	-----	----	--------	-------	------

0030 5 **DTM** M 1 1 ACTUAL ARRIVAL DATE

		Standard	Implementation		DOR	BBB	VOR	AOR	EOR	ALD	Business Rules
Tag	Name	St Format	St Format	Usage / Remark							
DTM											
C507	Date/time/period	M	M								
2005	Date or time or period function code qualifier	M an..3	M an..3	132 = Transport means arrival date time, estimated							
2380	Date or time or period text	C an..35	C n..12	ACTUAL ARRIVAL DATE TIME <i>Mandatory if inbound</i>	C	C	C	C	C	C	Actual arrival date and time of the means of transport entering the Republic.
2379	Date or time or period format code	C an..3	C an..3	203 = CCYYMMDDHHMM							

**Remark:**

**Example:**  
DTM+132:201708151234:203'

No = Consecutive segment number  
 MaxOcc = Maximum occurrence of the segment/group  
 Counter = Counter of segment/group within the standard  
 St = Status  
 EDIFACT: M=Mandatory, C=Conditional  
 User specific: M=Mandatory, O=Optional, C=Conditional

Counter No	Tag	St	MaxOcc	Level	Name
------------	-----	----	--------	-------	------

0030 6 **DTM** C 1 1 ESTIMATED DATE OF DEPARTURE

		Standard	Implementation		DOR	BBB	VOR	AOR	EOR	ALD	Business Rules
Tag	Name	St Format	St Format	Usage / Remark							
DTM											
C507	Date/time/period	M	M								
2005	Date or time or period function code qualifier	M an..3	M an..3	132 = Transport means arrival date time, estimated							
2380	Date or time or period text	C an..35	C n..12	ESTIMATED DATE OF DEPARTURE <i>If outbound then Mandatory</i>	C	C	C	C	C	C	Estimated departure date and time of the means of transport leaving the Republic.
2379	Date or time or period format code	C an..3	C an..3	203 = CCYYMMDDHHMM							

**Remark:**

**Example:**  
DTM+132:201708151234:203'

No = Consecutive segment number  
 MaxOcc = Maximum occurrence of the segment/group  
 Counter = Counter of segment/group within the standard  
 St = Status  
 EDIFACT: M=Mandatory, C=Conditional  
 User specific: M=Mandatory, O=Optional, C=Conditional

Counter No	Tag	St	MaxOcc	Level	Name
------------	-----	----	--------	-------	------

0030 7 **DTM** C 9 1 DATE / TIME FULLY UNLOADED / LOADED

		Standard	Implementation		DOR	BBB	VOR	AOR	EOR	ALD	Business Rules
Tag	Name	St Format	St Format	Usage / Remark							
DTM											
C507	Date/time/period	M	M								
2005	Date or time or period function code qualifier	M an..3	M an..3	<b>778</b> = Conveyance port activity date/ time							
2380	Date or time or period text	C an..35	C n..12	DATE / TIME FULLY UNLOADED / LOADED <i>If not containerised - Mandatory</i>		M	C	M	M	M	The date / time that the means of transport has been fully unloaded / loaded.
2379	Date or time or period format code	C an..3	C an..3	<b>203</b> = CCYYMMDDHHMM							

**Remark:**

**Example:**  
DTM+778:201708241500:203'

No = Consecutive segment number  
 MaxOcc = Maximum occurrence of the segment/group  
 Counter = Counter of segment/group within the standard  
 St = Status  
 EDIFACT: M=Mandatory, C=Conditional  
 User specific: M=Mandatory, O=Optional, C=Conditional

Counter No	Tag	St	MaxOcc	Level	Name	
0040	8	<b>FTX</b>	C	9	1	<b>EXCESS INDICATOR</b>

		Standard	Implementation		DOR	BBB	VOR	AOR	EOR	ALD	Business Rules
Tag	Name	St Format	St Format	Usage / Remark							
FTX											
4451	Text subject code qualifier	M an..3	M an..3	<b>ABO</b> = Discrepancy information							
4453	Free text function code	C an..3	N	Not used							
C107	Text reference	C	C								
4441	Free text description code	M an..17	M an..3	<b>EXCESS INDICATOR</b> 1 = Excess 2 = No Excess			M		M		For unmanifested cargo reported against the applicable voyage / flight.
1131	Code list identification code	C an..17	N	Not used							
3055	Code list responsible agency code	C an..3	N	Not used							
C108	Text literal	C	N								
4440	Free text	M an..512	N	Not used							
4440	Free text	C an..512	N	Not used							
4440	Free text	C an..512	N	Not used							
4440	Free text	C an..512	N	Not used							
4440	Free text	C an..512	N	Not used							
3453	Language name code	C an..3	N	Not used							
4447	Free text format code	C an..3	N	Not used							

**Remark:**

**Example:**

FTX+ABO++1'



Counter	No	Tag	St	MaxOcc	Level	Name
0040	9	<b>FTX</b>	C	9	1	IMPORT/EXPORT/ TRANSHIPMENT INDICATOR

		Standard	Implementation		DOR	BBB	VOR	AOR	EOR	ALD	Business Rules
Tag	Name	St Format	St Format	Usage / Remark							
FTX											
4451	Text subject code qualifier	M an..3	M an..3	ADI = Field of application							
4453	Free text function code	C an..3	N	Not used							
C107	Text reference	C	C								
4441	Free text description code	M an..17	M an..3	IMPORT/EXPORT/ TRANSHIPMENT INDICATOR 830 = Export 929 = Import 950 = Transit 399 = Transhipment	M	M	M	M	M	M	Transit is a customs procedure that allows goods imported on board foreign-going vessels, aircraft, a cross-border railway carriage and trucks to be transported through the Republic from the place in the Republic where the goods were off-loaded from the vessel, aircraft or railway carriage or where it entered the Republic (by road) to a place of exit from where the goods are to be exported from the Republic.  Transhipment is a customs procedure that allows imported goods to be transferred at a customs seaport or airport from the foreign-going vessel or aircraft on which those goods were imported to another foreign-going vessel or aircraft at that seaport or airport on which those goods are to be exported from the Republic.
1131	Code list identification code	C an..17	N	Not used							
3055	Code list responsible agency code	C an..3	N	Not used							
C108	Text literal	C	N								
4440	Free text	M an..512	N	Not used							
4440	Free text	C an..512	N	Not used							
4440	Free text	C an..512	N	Not used							
4440	Free text	C an..512	N	Not used							
4440	Free text	C an..512	N	Not used							
3453	Language name code	C an..3	N	Not used							
4447	Free text format code	C an..3	N	Not used							

Remark:

Example:

FTX+ADI++929'

Counter No	Tag	St	MaxOcc	Level	Name
0050	<b>SG1</b>	C	9	1	RFF
0060 10	<b>RFF</b>	M	1	1	DOCUMENT TO BE AMENDED

		Standard	Implementation		DOR	BBB	VOR	AOR	EOR	ALD	Business Rules
Tag	Name	St Format	St Format	Usage / Remark							
RFF											
C506	Reference	M	M								
1153	Reference code qualifier	M an..3	M an..3	<b>ACW = Reference number to previous message</b>							
1154	Reference identifier	C an..70	C an..35	DOCUMENT TO BE AMENDED <b>Mandatory should this message be an amendment to a previous message or a cancellation of a previous message.</b>	C	C	C	C	C	C	
1156	Document line identifier	C an..6	N	Not used							
1056	Version identifier	C an..9	N	Not used							
1060	Revision identifier	C an..6	N	Not used							

**Remark:**

**Example:**

RFF+ACW:123456789A'

Counter No	Tag	St	MaxOcc	Level	Name
0080	SG2	M	1	1	TDT-RFF-SG3
0090	11 TDT	M	1	1	Transport information

		Standard	Implementation		DOR	BBB	VOR	AOR	EOR	ALD	Business Rules
Tag	Name	St Format	St Format	Usage / Remark							
TDT											
8051	Transport stage code qualifier	M an..3	M an..3	20 = Main-carriage transport	M	M	M	M	M	M	
8028	Means of transport journey identifier	C an..17	M an..17	CONVEYANCE NUMBER The ID of the sender of the EDI message.	M	M	M	M	M	M	Voyage number, flight number, trip number etc. as assigned by the principal carrier e.g. shipping line, airline etc operating the means of transport
C220	Mode of transport	C	C								
8067	Transport mode name code	C an..3	M an..3	TRANSPORT CODE 1 = Maritime transport 2 = Rail transport 3 = Road transport 4 = Air transport	M	M	M	M	M	M	Applicable numeric main carriage transport code
8066	Transport mode name	C an..17	N	Not used							
C001	Transport means	C	N	Not used							
8179	Transport means description code	C an..8	N	Not used							
1131	Code list identification code	C an..17	N	Not used							
3055	Code list responsible agency code	C an..3	N	Not used							
8178	Transport means description code	C an..17	N	Not used							
C040	Carrier	C	C								
3127	Carrier identifier	C an..17	M an..17	CARRIER CODE SARS Code List 9 [Applicable numeric main carriage transport code (UN Recommendation 19). Also refer to the SARS Code List 9.]	M	M	M	M	M	M	Operator code of the carrier operating the means of transport.
1131	Code list identification code	C an..17	C an..17	172 = Carrier code							
3055	Code list responsible agency code	C an..3	C an..3	3 = IATA (International Air Transport Association) 20 = BIC (Bureau International des Containeurs) 166 = US, National Motor Freight Classification Association							
3126	Carrier name	C an..35	N	Not used							
8101	Transit direction indicator code	C an..3	N	Not used							
C401	Excess transportation information	C	N	Not used							
8457	Excess transportation reason code	M an..3	N	Not used							
8459	Excess transportation responsibility code	M an..3	N	Not used							
7130	Customer shipment authorisation identifier	C an..17	N	Not used							
C222	Transport identification	C	C								
8213	Transport means identification name identifier	C an..35	C an..9	TRANSPORT ID	M	M	M	O	O		Radio Call Sign
1131	Code list identification code	C an..17	C an..17	103 = Call sign directory							
3055	Code list responsible agency code	C an..3	N	Not used							
8212	Transport means identification name	C an..70	N	Not used							
8453	Transport means nationality code	C an..3	N	Not used							
8281	Transport means ownership indicator code	C an..3	N	Not used							
C003	Power type	C	N	Not used							
7041	Power type code	C an..3	N	Not used							
1131	Code list identification code	C an..17	N	Not used							
3055	Code list responsible agency code	C an..3	N	Not used							

No = Consecutive segment number  
 MaxOcc = Maximum occurrence of the segment/group  
 Counter = Counter of segment/group within the standard  
 St = Status  
 EDIFACT: M=Mandatory, C=Conditional  
 User specific: M=Mandatory, O=Optional, C=Conditional

		Standard	Implementation									
Tag	Name	St Format	St Format	Usage / Remark	DOR	BBB	VOR	AOR	EOR	ALD	Business Rules	
7040	Power type description	C an..17	N	Not used								

**Remark:**

**Example:**

TDT+20+ABCD1234567890+1++ABCD:172:20+++ATYU13:103'

No = Consecutive segment number

MaxOcc = Maximum occurrence of the segment/group

Counter = Counter of segment/group within the standard

St = Status

EDIFACT: M=Mandatory, C=Conditional

User specific: M=Mandatory, O=Optional, C=Conditional

Counter No	Tag	St	MaxOcc	Level	Name
0080	<b>SG2</b>	M	1	1	TDT-RFF-SG3
0110 12	<b>RFF</b>	C	9	2	MANIFEST TYPE

		Standard	Implementation		DOR	BBB	VOR	AOR	EOR	ALD	Business Rules
Tag	Name	St Format	St Format	Usage / Remark							
RFF											
C506	Reference	M	M								
1153	Reference code qualifier	M an..3	M an..3	<b>AFB</b> = Cargo manifest number							
1154	Reference identifier	C an..70	C an..70	<b>MANIFEST TYPE</b> <b>22</b> = Export <b>23</b> = Import <b>24</b> = Transshipment <b>28</b> = Transit <b>ZZZ</b> = Mutually defined - Specify at line level <b>57</b> = Freight Remaining on Board		M		M		M	
1156	Document line identifier	C an..6	N	Not used							
1056	Version identifier	C an..9	N	Not used							
1060	Revision identifier	C an..6	N	Not used							

Remark:

Example:  
RFF+AFB: 22 '

Counter No	Tag	St	MaxOcc	Level	Name
0080	<b>SG2</b>	M	1	1	TDT-RFF-SG3
0110 13	<b>RFF</b>	C	9	2	PRINCIPAL CARRIER CONVEYANCE NUMBER

		Standard	Implementation								Business Rules
Tag	Name	St Format	St Format	Usage / Remark	DOR	BBB	VOR	AOR	EOR	ALD	
RFF											
C506	Reference	M	M								
1153	Reference code qualifier	M an..3	M an..3	ACL = Principal reference number							
1154	Reference identifier	C an..70	M an..17	PRINCIPAL CARRIER CONVEYANCE NUMBER	M	M	M	M	M	M	The voyage or flight number assigned by the Carrier who owns, operates or leases the means of transport on which the goods are transported.
1156	Document line identifier	C an..6	N	Not used							
1056	Version identifier	C an..9	N	Not used							
1060	Revision identifier	C an..6	N	Not used							

**Remark:**  
**Example:**  
 RFF+ACL:1233322114556'

Counter No	Tag	St	MaxOcc	Level	Name
0120	SG3	C	9	2	LOC
0130 14	LOC	M	1	2	PLACE / PORT OF DISCHARGE

		Standard	Implementation		DOR	BBB	VOR	AOR	EOR	ALD	Business Rules
Tag	Name	St Format	St Format	Usage / Remark							
LOC											
3227	Location function code qualifier	M an..3	M an..3	11 = Place of discharge							
C517	Location identification	C	C								
3225	Location identifier	C an..35	C an..5	Place / Port of discharge in the Republic <i>If inbound, then Mandatory Import RSA port</i> Registration number/ID of the means of transport.	C	C	C	C	C	C	
1131	Code list identification code	C an..17	C an..17	139 = Port							
3055	Code list responsible agency code	C an..3	C an..3	6 = UN/ECE (United Nations - Economic Commission for Europe)							
3224	Location name	C an..256	N	Not used							
C519	Related location one identification	C	C								
3223	First related location identifier	C an..35	C an..25	Terminal / Berth of discharge / load in the Republic		M				M	
1131	Code list identification code	C an..17	N	Not used							
3055	Code list responsible agency code	C an..3	C an..3	ZZZ = South African Revenue Service							
3222	First related location name	C an..70	N	Not used							
C553	Related location two identification	C	N								
3233	Second related location identifier	C an..35	N	Not used							
1131	Code list identification code	C an..17	N	Not used							
3055	Code list responsible agency code	C an..3	N	Not used							
3232	Second related location name	C an..70	N	Not used							
5479	Relation code	C an..3	N	Not used							

Remark:

Example:

LOC+11+ZADUR:139:6+07::ZZZ'

Counter No	Tag	St	MaxOcc	Level	Name
0150	<b>SG4</b>	M	1	1	MESSAGE SENDER
0160 15	<b>NAD</b>	M	1	1	MESSAGE SENDER

Standard		Implementation									Business Rules
Tag	Name	St Format	St Format	Usage / Remark	DOR	BBB	VOR	AOR	EOR	ALD	
NAD											
3035	Party function code qualifier	M an..3	M an..3	<b>MS</b> = Document/message issuer/sender							
C082	Party identification details	C	C								
3039	Party identifier	M an..35	M an..35	<b>MESSAGE SENDER</b> Actual arrival date of the means of transport. The ID of the sender of the EDI message. Must match sender id in UNB.	M	M	M	M	M	M	
1131	Code list identification code	C an..17	C an..17								
3055	Code list responsible agency code	C an..3	C an..3	<b>ZZZ</b> = South African Revenue Service							
C058	Name and address	C	N								
3124	Name and address description	M an..35	N	Not used							
3124	Name and address description	C an..35	N	Not used							
3124	Name and address description	C an..35	N	Not used							
3124	Name and address description	C an..35	N	Not used							
3124	Name and address description	C an..35	N	Not used							
C080	Party name	C	N								
3036	Party name	M an..70	N	Not used							
3036	Party name	C an..70	N	Not used							
3036	Party name	C an..70	N	Not used							
3036	Party name	C an..70	N	Not used							
3036	Party name	C an..70	N	Not used							
3045	Party name format code	C an..3	N	Not used							
C059	Street	C	N								
3042	Street and number or post office box identifier	M an..35	N	Not used							
3042	Street and number or post office box identifier	C an..35	N	Not used							
3042	Street and number or post office box identifier	C an..35	N	Not used							
3042	Street and number or post office box identifier	C an..35	N	Not used							
3164	City name	C an..35	N	Not used							
C819	Country subdivision details	C	N								
3229	Country subdivision identifier	C an..9	N	Not used							
1131	Code list identification code	C an..17	N	Not used							
3055	Code list responsible agency code	C an..3	N	Not used							
3228	Country subdivision name	C an..70	N	Not used							
3251	Postal identification code	C an..17	N	Not used							
3207	Country identifier	C an..3	N	Not used							

Remark:

Example:

NAD+MS+12345678ABC::ZZZ'



Counter No	Tag	St	MaxOcc	Level	Name
0150	<b>SG4</b>	M	9	1	OUTTURN PROVIDER CODE
0160 16	<b>NAD</b>	M	1	1	OUTTURN PROVIDER CODE

		Standard	Implementation		DOR	BBB	VOR	AOR	EOR	ALD	Business Rules
Tag	Name	St Format	St Format	Usage / Remark							
NAD											
3035	Party function code qualifier	M an..3	M an..3	<b>RL = Reporting carrier (Customs)</b>							
C082	Party identification details	C	C								
3039	Party identifier	M an..35	M an..35	<b>OUTTURN PROVIDER CODE</b> SARS Code List 3 [For maritime Bulk and Break Bulk cargo the terminal of discharge must be specified.] The ID of the sender of the EDI message. Must match sender id in UNB.	M	M	M	M	M	M	The code of the terminal / depot submitting the outturn report.
1131	Code list identification code	C an..17	C an..17								
3055	Code list responsible agency code	C an..3	C an..3	<b>ZZZ = South African Revenue Service</b>							
C058	Name and address	C	N								
3124	Name and address description	M an..35	N	Not used							
3124	Name and address description	C an..35	N	Not used							
3124	Name and address description	C an..35	N	Not used							
3124	Name and address description	C an..35	N	Not used							
3124	Name and address description	C an..35	N	Not used							
C080	Party name	C	N								
3036	Party name	M an..70	N	Not used							
3036	Party name	C an..70	N	Not used							
3036	Party name	C an..70	N	Not used							
3036	Party name	C an..70	N	Not used							
3036	Party name	C an..70	N	Not used							
3045	Party name format code	C an..3	N	Not used							
C059	Street	C	N								
3042	Street and number or post office box identifier	M an..35	N	Not used							
3042	Street and number or post office box identifier	C an..35	N	Not used							
3042	Street and number or post office box identifier	C an..35	N	Not used							
3042	Street and number or post office box identifier	C an..35	N	Not used							
3164	City name	C an..35	N	Not used							
C819	Country subdivision details	C	N								
3229	Country subdivision identifier	C an..9	N	Not used							
1131	Code list identification code	C an..17	N	Not used							
3055	Code list responsible agency code	C an..3	N	Not used							
3228	Country subdivision name	C an..70	N	Not used							
3251	Postal identification code	C an..17	N	Not used							
3207	Country identifier	C an..3	N	Not used							

**Remark:**

**Example:**

NAD+RL+12345678ABC::ZZZ'

No = Consecutive segment number  
 MaxOcc = Maximum occurrence of the segment/group  
 Counter = Counter of segment/group within the standard

St = Status  
 EDIFACT: M=Mandatory, C=Conditional  
 User specific: M=Mandatory, O=Optional, C=Conditional

Counter No	Tag	St	MaxOcc	Level	Name
0200	<b>SG6</b>	M	999	1	<b>EQD-DTM-SEL</b>
0210 17	<b>EQD</b>	M	1	1	<b>Equipment details</b>

Standard		Implementation								Business Rules
Tag	Name	St Format	St Format	Usage / Remark	DOR	BBB	VOR	AOR	EOR	ALD
EQD										
8053	Equipment type code qualifier	M an..3	M an..3	<b>EQUIPMENT TYPE</b> BB = Un-containerized cargo (breakbulk) CN = Container UL = ULD (Unit load device)	M	M	M	M	M	M
C237 8260	Equipment identification Equipment identifier	C C an..17	C C an..17	<b>CONTAINER NUMBER/WAGON NUMBER/Transport Equipment Number</b> <i>For containerized goods, the container number, seal number and status are required</i>	M		C	O	O	O
1131 3055	Code list identification code Code list responsible agency code	C an..17 C an..3	N N	Not used Not used						
3207 C224	Country identifier Equipment size and type	C an..3 C	N C	Not used						
8155	Equipment size and type description code	C an..10	C an..10	<b>CONTAINER SIZE/TYPE</b> First 2 characters is the size and next 2 characters is the type	M					
1131 3055	Code list identification code Code list responsible agency code	C an..17 C an..3	C an..17 C an..3	102 = Size and type 5 = ISO (International Organization for Standardization)						
8154	Equipment size and type description	C an..35	N	Not used						
8077 8249	Equipment supplier code Equipment status code	C an..3 C an..3	N C an..3	Not used <b>CONTAINER STATUS/LANDED PURPOSE</b> 1 = Continental 2 = Export 3 = Import 6 = Transhipment	M					
8169	Full or empty indicator code	C an..3	C an..3	<b>SERVICE TYPE</b> 4 = Empty [Used to indicate the status of the container.] 4 = Empty 5 = Full 7 = Full, mixed consignment 8 = Full, single consignment	M					
4233	Marking instructions code	C an..3	N	Not used						

**Remark:**

**Example:**

EQD+CN+NONU1234567+16G0:102:5++3+4'

No = Consecutive segment number  
MaxOcc = Maximum occurrence of the segment/group  
Counter = Counter of segment/group within the standard

St = Status  
EDIFACT: M=Mandatory, C=Conditional  
User specific: M=Mandatory, O=Optional, C=Conditional

Counter No	Tag	St	MaxOcc	Level	Name
0200	<b>SG6</b>	M	999	1	EQD-DTM-SEL
0230 18	<b>DTM</b>	C	9	2	DATE/TIME UNPACKED / DECONSOLIDATED

		Standard	Implementation		DOR	BBB	VOR	AOR	EOR	ALD	Business Rules
Tag	Name	St Format	St Format	Usage / Remark							
DTM											
C507	Date/time/period	M	M								
2005	Date or time or period function code qualifier	M an..3	M an..3	<b>164</b> = Processing end date/time							
2380	Date or time or period text	C an..35	C n..12	DATE/TIME UNPACKED/DECONSOLIDATED/DISCHARGED/LOADED <i>Mandatory for containerised cargo</i> The date when the container is unpacked or air cargo is deconsolidated.	C		C		C		The date when the container is packed/unpacked or air cargo is consolidated/deconsolidated.
2379	Date or time or period format code	C an..3	C an..3	<b>203</b> = CCYYMMDDHHMM							

**Remark:**

**Example:**

DTM+164:201708151530:203'

Counter No	Tag	St	MaxOcc	Level	Name
0200	<b>SG6</b>	M	999	1	EQD-DTM-SEL
0230 19	<b>DTM</b>	C	9	2	DATE / TIME FULLY UNLOADED

		Standard	Implementation		DOR	BBB	VOR	AOR	EOR	ALD	Business Rules
Tag	Name	St Format	St Format	Usage / Remark							
DTM											
C507	Date/time/period	M	M								
2005	Date or time or period function code qualifier	M an..3	M an..3	<b>420</b> = Unloaded, date and time							
2380	Date or time or period text	C an..35	C n..12	DATE / TIME FULLY UNLOADED			O				
2379	Date or time or period format code	C an..3	C an..3	<b>203</b> = CCYYMMDDHHMM							

Remark:

Example:  
DTM+420:201708151245:203'

Counter No	Tag	St	MaxOcc	Level	Name
0200	<b>SG6</b>	M	999	1	EQD-DTM-SEL
0260 20	<b>SEL</b>	M	4	2	Seal number

Standard		Implementation									Business Rules
Tag	Name	St Format	St Format	Usage / Remark	DOR	BBB	VOR	AOR	EOR	ALD	
SEL											
9308	Transport unit seal identifier	C an..35	C an..35	SEAL NUMBER-1 <i>For containerized goods, the container number, seal number and status are required</i>	M		C		O		Should no Seal Number be available, "NO SEAL NO" must be specified within this field. This segment may occur a maximum of four times.
C215	Seal issuer	C	C								
9303	Sealing party name code	C an..3	C an..3	SEALING PARTY-1 SH = Shipper [Seal as assigned by the Shipping Line.] TO = Terminal operator [On imports, the Seal Number assigned by the Terminal Operator should the Shipper's Seal be damaged.] AA = Consolidator [There will always be two occurrences with the AA qualifier. The first occurrence must always contain the Seal Number found on arrival at the Depot. The second occurrence must contain the Seal Number on unpacking the container. Both these Seal Numbers are mandatory.] AA = Consolidator AB = Unknown CA = Carrier CU = Customs SH = Shipper TO = Terminal operator	O		O		O		
1131	Code list identification code	C an..17	N	Not used							
3055	Code list responsible agency code	C an..3	N	Not used							
9302	Sealing party name	C an..35	N	Not used							
4517	Seal condition code	C an..3	C an..3	SEAL STATUS <i>SEAL STATUS is Mandatory if SEAL NUMBER is provided</i> 1 = In right condition 2 = Damaged	C		C		C		
C208	Identity number range	C	N	Not used							
7402	Object identifier	M an..35	N	Not used							
7402	Object identifier	C an..35	N	Not used							
4525	Seal type code	C an..3	N	Not used							

**Remark:**

**Example:**

SEL+123456654321+SH+1'

No = Consecutive segment number  
MaxOcc = Maximum occurrence of the segment/group  
Counter = Counter of segment/group within the standard

St = Status  
EDIFACT: M=Mandatory, C=Conditional  
User specific: M=Mandatory, O=Optional, C=Conditional

Counter No	Tag	St	MaxOcc	Level	Name
0400	<b>SG10</b>	M	999	1	<b>CNI-RFF-SG11</b>
0410 21	<b>CNI</b>	M	1	1	<b>Consignment information</b>

		Standard	Implementation		DOR	BBB	VOR	AOR	EOR	ALD	Business Rules
Tag	Name	St Format	St Format	Usage / Remark							
CNI											
1490	Consolidation item number	C n..5	C n..5	LINE NUMBER / WAYBILL LINE NUMBER	O	O		O		O	Sequential number assigned to each Waybill
C503	Document/message details	C	C								
1004	Document identifier	C an..70	C an..35	<b>TRANSPORT DOCUMENT NUMBER</b> In the case of FCL and LCL cargo information submitted by the Carrier, this field will contain the MasterBill Of Lading number.  In the case of FCL Groupage cargo information submitted by a Broker , this field will contain the House Bill Of Lading Number.  For Air, in the case of a Master Air Waybill in respect of straight cargo, the Master Air Waybill Number will also be reflected here.  For air, in the case of consolidated cargo, the House Air Waybill number will be reflected here.  In respect of a sub-consolidations the House Air Waybill Number / Bill of Lading Number issued by the co-loading agent to the consignee must be reflected here.  For Rail, supply the Rail Consignment Note Number.  For Road, this is the Waybill/Invoice Number issued by theCarrier for an individual consignment.	M	M		M		M	
1373	Document status code	C an..3	N	Not used							
1366	Document source description	C an..70	N	Not used							
3453	Language name code	C an..3	N	Not used							
1056	Version identifier	C an..9	N	Not used							
1060	Revision identifier	C an..6	N	Not used							
1312	Consignment load sequence identifier	C n..4	N	Not used							

Remark:

Example:

CNI+1+987654321ASDFGHJKL'

Counter No	Tag	St	MaxOcc	Level	Name
0400	<b>SG10</b>	M	999	1	<b>CNI-RFF-SG11</b>
0420 22	<b>RFF</b>	C	9	2	<b>CARGO CARRIER CODE</b>

		Standard	Implementation		DOR	BBB	VOR	AOR	EOR	ALD	Business Rules
Tag	Name	St Format	St Format	Usage / Remark							
RFF											
C506	Reference	M	M								
1153	Reference code qualifier	M an..3	M an..3	<b>AHY</b> = Freight Forwarder number							
1154	Reference identifier	C an..70	C an..35	<b>CARGO CARRIER CODE</b> For AOR: Mandatory if CONSOLIDATION INDICATOR = CO (Consol)	M		O	M	O	O	The SARS-assigned code of the Broker that reports the House Bill Of Lading/Air Waybill.
1156	Document line identifier	C an..6	N	Not used							
1056	Version identifier	C an..9	N	Not used							
1060	Revision identifier	C an..6	N	Not used							

**Remark:**

**Example:**  
RFF+AHY:12345678'

No = Consecutive segment number  
 MaxOcc = Maximum occurrence of the segment/group  
 Counter = Counter of segment/group within the standard  
 St = Status  
 EDIFACT: M=Mandatory, C=Conditional  
 User specific: M=Mandatory, O=Optional, C=Conditional

Counter No	Tag	St	MaxOcc	Level	Name
0400	<b>SG10</b>	M	999	1	CNI-RFF-SG11
0420 23	<b>RFF</b>	C	9	2	EXTERNAL REFERENCE

Standard		Implementation									
Tag	Name	St Format	St Format	Usage / Remark	DOR	BBB	VOR	AOR	EOR	ALD	Business Rules
RFF											
C506	Reference	M	M								
1153	Reference code qualifier	M an..3	M an..3	<b>AIH</b> = Common transaction reference number							
1154	Reference identifier	C an..70	C an..35	<b>EXTERNAL REFERENCE</b> A reference number assigned by the outturn provider.	O	O	O	O	O	O	
1156	Document line identifier	C an..6	N	Not used							
1056	Version identifier	C an..9	N	Not used							
1060	Revision identifier	C an..6	N	Not used							

**Remark:**

**Example:**  
RFF+AIH:555666777889900'



Counter No	Tag	St	MaxOcc	Level	Name
0400	<b>SG10</b>	M	999	1	CNI-RFF-SG11
0420 24	<b>RFF</b>	C	9	2	MASTER CARGO CARRIER CODE

		Standard	Implementation		DOR	BBB	VOR	AOR	EOR	ALD	Business Rules
Tag	Name	St Format	St Format	Usage / Remark							
RFF											
C506	Reference	M	M								
1153	Reference code qualifier	M an..3	M an..3	<b>AAZ</b> = Standard Carrier Alpha Code (SCAC) number							
1154	Reference identifier	C an..70	C an..35	<b>MASTER CARGO CARRIER CODE</b>	M	M	O	M	O	M	The BIC, SCAC or SARS-assigned code of the Carrier that issued the Master / Ocean Bill of Lading  The IATA or SARS-assigned code of the Carrier that issued the Master Air Waybill.  The SARS-assigned code of the Carrier that reports the Road Freight Manifest  The SARS-assigned code "TFR" for Transnet Freight Rail as Rail Carrier  For courier cargo where the courier has an IATA airline code reflect that code here. Where the courier does not have an IATA airline code reflect code "000" here  The SARS-assigned code of the Broker where a Master House is reported - i.e. in the case of sub-consolidations
1156	Document line identifier	C an..6	N	Not used							
1056	Version identifier	C an..9	N	Not used							
1060	Revision identifier	C an..6	N	Not used							

**Remark:**

**Example:**

RFF+AAZ: ABCD'

No = Consecutive segment number  
 MaxOcc = Maximum occurrence of the segment/group  
 Counter = Counter of segment/group within the standard  
 St = Status  
 EDIFACT: M=Mandatory, C=Conditional  
 User specific: M=Mandatory, O=Optional, C=Conditional

Counter No	Tag	St	MaxOcc	Level	Name
0400	<b>SG10</b>	M	999	1	CNI-RFF-SG11
0420 25	<b>RFF</b>	C	9	2	MASTER TRANSPORT DOCUMENT NUMBER

Standard		Implementation									Business Rules
Tag	Name	St Format	St Format	Usage / Remark	DOR	BBB	VOR	AOR	EOR	ALD	
RFF											
C506	Reference	M	M								
1153	Reference code qualifier	M an..3	M an..3	<b>MB</b> = Master bill of lading number							
1154	Reference identifier	C an..70	C an..35	<b>MASTER TRANSPORT DOCUMENT NUMBER</b> Master / Ocean Bill of Lading, Air Waybill, Rail Consignment Note, Road Freight Manifest	M	M		M		M	
1156	Document line identifier	C an..6	N	Not used							
1056	Version identifier	C an..9	C an..3	<b>CONSOLIDATION INDICATOR</b> For AOR, indicate if cargo is Consol or Straight CO = Consol [Consol – a number of consignments grouped together by a freight forwarder/consolidator as one shipment.] ST = Straight [Straight – a consignment carried under a master air waybill directly to a consignee without being consolidated by a freight forwarder/consolidator] <b>CO</b> = Consol <b>ST</b> = Straight	O	O	O	M	O	O	
1060	Revision identifier	C an..6	N	Not used							

**Remark:**

**Example:**

RFF+MB:ABCD1234567890ASDFGHJK::ST'

No = Consecutive segment number  
 MaxOcc = Maximum occurrence of the segment/group  
 Counter = Counter of segment/group within the standard  
 St = Status  
 EDIFACT: M=Mandatory, C=Conditional  
 User specific: M=Mandatory, O=Optional, C=Conditional

Counter No	Tag	St	MaxOcc	Level	Name
0400	<b>SG10</b>	M	999	1	CNI-RFF-SG11
0420 26	<b>RFF</b>	C	9	2	PARENT TRANSPORT DOCUMENT NUMBER

		Standard	Implementation		DOR	BBB	VOR	AOR	EOR	ALD	Business Rules
Tag	Name	St Format	St Format	Usage / Remark							
RFF											
C506	Reference	M	M								
1153	Reference code qualifier	M an..3	M an..3	<b>XP</b> = Previous cargo control number							
1154	Reference identifier	C an..70	C an..35	<b>PARENT TRANSPORT DOCUMENT NUMBER</b> For sub-consolidations the (Master) House Bill of Lading / Air Waybill number of the consolidating / groupage agent	O	O		O			
1156	Document line identifier	C an..6	N	Not used							
1056	Version identifier	C an..9	N	Not used							
1060	Revision identifier	C an..6	N	Not used							

Remark:

Example:  
RFF+XP:WXYZ1234567890LKJHGFDSA'

Counter No	Tag	St	MaxOcc	Level	Name
0400	<b>SG10</b>	M	999	1	CNI-RFF-SG11
0420 27	<b>RFF</b>	C	9	2	LRN EXIT

		Standard	Implementation		DOR	BBB	VOR	AOR	EOR	ALD	Business Rules
Tag	Name	St Format	St Format	Usage / Remark							
RFF											
C506	Reference	M	M								
1153	Reference code qualifier	M an..3	M an..3	<b>ABT</b> = Goods declaration document identifier, Customs							
1154	Reference identifier	C an..70	C an..35	LRN EXIT <i>Mandatory if Outbound</i>	C	C		C			
1156	Document line identifier	C an..6	N	Not used							
1056	Version identifier	C an..9	C an..5	EXPORT PROCEDURE Declaration CPC RPC PPC	O	O		O			CPC + RPC + PPC
1060	Revision identifier	C an..6	N	Not used							

Remark:

Example:

RFF+ABT:12345678ABC20170815123456::H6000'

Counter No	Tag	St	MaxOcc	Level	Name
0430	<b>SG11</b>	C	999	2	<b>GID-FTX-MEA-PCI-SG13-SG14</b>
0440	28 <b>GID</b>	M	1	2	<b>Goods item details</b>

		Standard	Implementation		DOR	BBB	VOR	AOR	EOR	ALD	Business Rules
Tag	Name	St Format	St Format	Usage / Remark							
GID											
1496	Goods item number	C an..6	C n..5	<b>GOODS LINE NUMBER</b> Line Number relevant to the consignment line item as per the Manifest, except for Document Type VOR, in which case a sequentially assigned number must be supplied.	M	M	M	M	M	M	
C213	Number and type of packages	C	C								
7224	Package quantity	C n..8	C n..8	<b>NUMBER OF PACKAGES</b> Number of packages manifested. For Document Type BBB, as far as it relates to bulk cargo, use "1"	M	M		M		M	
7065	Package type description code	C an..17	C an..17	<b>TYPE OF PACKAGES</b> UN Recommendation 21 [NOTE FOLLOWING CODES FOR BULK: Bulk, liquid = VL Bulk, solid, largeparticles("nodules") = VO Bulk, liquefiedgas(atabnormaltemperature/pressure) = VQ Bulk, solid, granularparticles("grains") = VR Bulk, solid, fineparticles("powders") = VY] UN Recommendation 21	M	M	M	M	M	M	
1131	Code list identification code	C an..17	N	Not used							
3055	Code list responsible agency code	C an..3	N	Not used							
7064	Type of packages	C an..35	C an..3	<b>CARGO TYPE INDICATOR</b> DB = Dry bulk LB = Liquid bulk BB = Break Bulk CN = Container	M	M	M	M	M	M	
7233	Packaging related description code	C an..3	N	Not used							
C213	Number and type of packages	C	C								
7224	Package quantity	C n..8	C n..8	<b>NUMBER OF PACKAGES FOUND / PACKED / LOADED</b> Packages found after unpacking. For Document Type BBB, as far as it relates to bulk cargo, use "1".	M	M	M	M	M	M	
7065	Package type description code	C an..17	N	Not used							
1131	Code list identification code	C an..17	N	Not used							
3055	Code list responsible agency code	C an..3	N	Not used							
7064	Type of packages	C an..35	N	Not used							
7233	Packaging related description code	C an..3	N	Not used							
C213	Number and type of packages	C	N								
7224	Package quantity	C n..8	N	Not used							
7065	Package type description code	C an..17	N	Not used							
1131	Code list identification code	C an..17	N	Not used							
3055	Code list responsible agency code	C an..3	N	Not used							
7064	Type of packages	C an..35	N	Not used							
7233	Packaging related description code	C an..3	N	Not used							
C213	Number and type of packages	C	N								
7224	Package quantity	C n..8	N	Not used							
7065	Package type description code	C an..17	N	Not used							
1131	Code list identification code	C an..17	N	Not used							
3055	Code list responsible agency code	C an..3	N	Not used							
7064	Type of packages	C an..35	N	Not used							
7233	Packaging related description code	C an..3	N	Not used							

No = Consecutive segment number  
 MaxOcc = Maximum occurrence of the segment/group  
 Counter = Counter of segment/group within the standard

St = Status  
 EDIFACT: M=Mandatory, C=Conditional  
 User specific: M=Mandatory, O=Optional, C=Conditional

		Standard	Implementation									
Tag	Name	St Format	St Format	Usage / Remark	DOR	BBB	VOR	AOR	EOR	ALD	Business Rules	
C213	Number and type of packages	C	N									
7224	Package quantity	C n..8	N	Not used								
7065	Package type description code	C an..17	N	Not used								
1131	Code list identification code	C an..17	N	Not used								
3055	Code list responsible agency code	C an..3	N	Not used								
7064	Type of packages	C an..35	N	Not used								
7233	Packaging related description code	C an..3	N	Not used								

**Remark:**

**Example:**  
GID+1+10:BX:::BB+9'

No = Consecutive segment number  
 MaxOcc = Maximum occurrence of the segment/group  
 Counter = Counter of segment/group within the standard  
 St = Status  
 EDIFACT: M=Mandatory, C=Conditional  
 User specific: M=Mandatory, O=Optional, C=Conditional

Counter No	Tag	St	MaxOcc	Level	Name
0430	SG11	C	999	2	GID-FTX-MEA-PCI-SG13-SG14
0490 29	FTX	C	9	3	Condition

Standard		Implementation								Business Rules
Tag	Name	St Format	St Format	Usage / Remark	DOR	BBB	VOR	AOR	EOR	ALD
FTX										
4451	Text subject code qualifier	M an..3	M an..3	DAR = Damage remarks						
4453	Free text function code	C an..3	N	Not used						
C107	Text reference	C	C							
4441	Free text description code	M an..17	M an..3	PACKAGE CONDITION CODE 1 = Damaged 2 = Open/Broached 3 = Ullaged/Leaking/Evaporated 4 = Other	O	O	O	O	O	O
1131	Code list identification code	C an..17	N	Not used						
3055	Code list responsible agency code	C an..3	N	Not used						
C108	Text literal	C	C							
4440	Free text	M an..512	M an..350	PACKAGE CONDITION DESCRIPTION If Package condition code = other - then Mandatory	C	C	C	C	C	C
4440	Free text	C an..512	N	Not used						
4440	Free text	C an..512	N	Not used						
4440	Free text	C an..512	N	Not used						
4440	Free text	C an..512	N	Not used						
3453	Language name code	C an..3	N	Not used						
4447	Free text format code	C an..3	N	Not used						

Remark:

Example:

FTX+DAR++1+Box opened'

Counter No	Tag	St	MaxOcc	Level	Name
0430	SG11	C	999	2	GID-FTX-MEA-PCI-SG13-SG14
0490 30	FTX	C	9	3	Contents Found

		Standard	Implementation		DOR	BBB	VOR	AOR	EOR	ALD	Business Rules
Tag	Name	St Format	St Format	Usage / Remark							
FTX											
4451	Text subject code qualifier	M an..3	M an..3	AAQ = Package content's description							
4453	Free text function code	C an..3	C an..3								
C107	Text reference	C	C								
4441	Free text description code	M an..17	M an..17								
1131	Code list identification code	C an..17	N	Not used							
3055	Code list responsible agency code	C an..3	N	Not used							
C108	Text literal	C	C								
4440	Free text	M an..512	M an..350	CONTENTS FOUND TO BE <i>Where there is a discrepancy in contents, then CONTENTS FOUND TO BE, CONTENTS SHOULD BE is Mandatory</i>	C	C		C			
4440	Free text	C an..512	N	Not used							
4440	Free text	C an..512	N	Not used							
4440	Free text	C an..512	N	Not used							
4440	Free text	C an..512	N	Not used							
3453	Language name code	C an..3	N	Not used							
4447	Free text format code	C an..3	N	Not used							

Remark:

Example:

FTX+AAQ+1+5 Widgets+X'



Counter No	Tag	St	MaxOcc	Level	Name
0430	SG11	C	999	2	GID-FTX-MEA-PCI-SG13-SG14
0490 31	FTX	C	9	3	Contents Should be

Standard		Implementation									Business Rules
Tag	Name	St Format	St Format	Usage / Remark	DOR	BBB	VOR	AOR	EOR	ALD	
FTX											
4451	Text subject code qualifier	M an..3	M an..3	AEC = Text refers to expected data							
4453	Free text function code	C an..3	N	Not used							
C107	Text reference	C	C								
4441	Free text description code	M an..17	M an..3	<b>EXCESS/SHORT INDICATOR/CARGO STATUS INDICATOR</b> 1 = Excess 2 = Short 3 = None 4 = Unknown 5 = Part Shipment 6 = Split Storage 7 = Overcarried 8 = Short landed received	M	M		M		M	1 = Excess:- cargo found in excess of manifested quantity 2 = Short:- cargo found short of manifested quantity 3 = None: - no deviation from manifested quantity 4 = Unknown: - for cargo found that is unmanifested and for which a VOR / EOR will be submitted 5 = Part Shipment: - To be used when reporting goods that are received in parts ( as opposed to a complete consignment / shipment)by a temporary storage facility 6 = Split Storage: - to be used when goods belonging to a single consignment are stored at more than one temporary storage facility 7 = Overcarried:- for possible future use 8 = Short landed received:- for possible future use
1131	Code list identification code	C an..17	N	Not used							
3055	Code list responsible agency code	C an..3	N	Not used							
C108	Text literal	C	C								
4440	Free text	M an..512	M an..350	<b>CONTENTS SHOULD BE</b> Mandatory if Excess/Short indicator = 1 or 2.	C	C		C			
4440	Free text	C an..512	N	Not used							
4440	Free text	C an..512	N	Not used							
4440	Free text	C an..512	N	Not used							
4440	Free text	C an..512	N	Not used							
3453	Language name code	C an..3	N	Not used							
4447	Free text format code	C an..3	N	Not used							

**Remark:**  
**Example:**  
 FTX+AEC++2+6 Widgets'

Counter No	Tag	St	MaxOcc	Level	Name
0430	<b>SG11</b>	C	999	2	<b>GID-FTX-MEA-PCI-SG13-SG14</b>
0490 32	<b>FTX</b>	C	9	3	<b>DESCRIPTION OF GOODS</b>

		Standard	Implementation		DOR	BBB	VOR	AOR	EOR	ALD	Business Rules
Tag	Name	St Format	St Format	Usage / Remark							
FTX											
4451	Text subject code qualifier	M an..3	M an..3	<b>AAA = Goods item description</b>							
4453	Free text function code	C an..3	N	Not used							
C107	Text reference	C	N								
4441	Free text description code	M an..17	N	Not used							
1131	Code list identification code	C an..17	N	Not used							
3055	Code list responsible agency code	C an..3	N	Not used							
C108	Text literal	C	C								
4440	Free text	M an..512	M an..350	<b>DESCRIPTION OF GOODS</b>	M	M	M	M	M	M	
4440	Free text	C an..512	N	Not used							
4440	Free text	C an..512	N	Not used							
4440	Free text	C an..512	N	Not used							
4440	Free text	C an..512	N	Not used							
3453	Language name code	C an..3	N	Not used							
4447	Free text format code	C an..3	N	Not used							

Remark:

Example:

FTX+AAA+++6 Widgets 10x10'

Counter No	Tag	St	MaxOcc	Level	Name
0430	<b>SG11</b>	C	999	2	<b>GID-FTX-MEA-PCI-SG13-SG14</b>
0500 33	<b>MEA</b>	C	9	3	<b>Gross Weight</b>

		Standard	Implementation		DOR	BBB	VOR	AOR	EOR	ALD	Business Rules
Tag	Name	St Format	St Format	Usage / Remark							
MEA											
6311	Measurement purpose code qualifier	M an..3	M an..3	<b>AAE = Measurement</b>							
C502	Measurement details	C	C								
6313	Measured attribute code	C an..3	C an..3	<b>AAB = Goods item gross weight</b>							
6321	Measurement significance code	C an..3	N	Not used							
6155	Non-discrete measurement name code	C an..17	N	Not used							
6154	Non-discrete measurement name	C an..70	N	Not used							
C174	Value/range	C	C								
6411	Measurement unit code	C an..8	C an..8	<b>KGM = kilogram</b>	M	M		M		M	
6314	Measure	C an..18	C n..18	<b>GROSS MASS/WEIGHT</b>	M	M		M		M	
6162	Range minimum quantity	C n..18	N	Not used							
6152	Range maximum quantity	C n..18	N	Not used							
6432	Significant digits quantity	C n..2	N	Not used							
7383	Surface or layer code	C an..3	N	Not used							

**Remark:**

**Example:**

MEA+AAE+AAB+KGM:123'

Counter No	Tag	St	MaxOcc	Level	Name
0430	<b>SG11</b>	C	999	2	<b>GID-FTX-MEA-PCI-SG13-SG14</b>
0500 34	<b>MEA</b>	C	9	3	<b>Gross Weight Found</b>

Standard		Implementation									
Tag	Name	St Format	St Format	Usage / Remark	DOR	BBB	VOR	AOR	EOR	ALD	Business Rules
MEA											
6311	Measurement purpose code qualifier	M an..3	M an..3	<b>AAL = Cargo loaded</b>							
C502	Measurement details	C	C								
6313	Measured attribute code	C an..3	C an..3	<b>ACE = Ascertained weight</b>							
6321	Measurement significance code	C an..3	N	Not used							
6155	Non-discrete measurement name code	C an..17	N	Not used							
6154	Non-discrete measurement name	C an..70	N	Not used							
C174	Value/range	C	C								
6411	Measurement unit code	C an..8	C an..8	<b>KGM = kilogram</b>	M	M	M	M	M	M	
6314	Measure	C an..18	C n..18	<b>GROSS WEIGHT FOUND</b>	M	M	M	M	M	M	
6162	Range minimum quantity	C n..18	N	Not used							
6152	Range maximum quantity	C n..18	N	Not used							
6432	Significant digits quantity	C n..2	N	Not used							
7383	Surface or layer code	C an..3	N	Not used							

**Remark:**

**Example:**

MEA+AAL+ACE+KGM:185'

No = Consecutive segment number  
 MaxOcc = Maximum occurrence of the segment/group  
 Counter = Counter of segment/group within the standard  
 St = Status  
 EDIFACT: M=Mandatory, C=Conditional  
 User specific: M=Mandatory, O=Optional, C=Conditional

Counter No	Tag	St	MaxOcc	Level	Name
0430	<b>SG11</b>	C	999	2	<b>GID-FTX-MEA-PCI-SG13-SG14</b>
0500 35	<b>MEA</b>	C	9	3	<b>Gross Litres</b>

		Standard	Implementation		DOR	BBB	VOR	AOR	EOR	ALD	Business Rules
Tag	Name	St Format	St Format	Usage / Remark							
<b>MEA</b>											
6311	Measurement purpose code qualifier	M an..3	M an..3	<b>AAE = Measurement</b>							
C502	Measurement details	C	C								
6313	Measured attribute code	C an..3	C an..3	<b>ABJ = Volume</b>							
6321	Measurement significance code	C an..3	N	Not used							
6155	Non-discrete measurement name code	C an..17	N	Not used							
6154	Non-discrete measurement name	C an..70	N	Not used							
C174	Value/range	C	C								
6411	Measurement unit code	C an..8	C an..8	<b>LTR = litre</b>	O	C		O			
6314	Measure	C an..18	C n..18	<b>GROSS LITRES</b> Gross litres manifested. Mandatory for liquid bulk.	O	C		O			
6162	Range minimum quantity	C n..18	N	Not used							
6152	Range maximum quantity	C n..18	N	Not used							
6432	Significant digits quantity	C n..2	N	Not used							
7383	Surface or layer code	C an..3	N	Not used							

**Remark:**

**Example:**

MEA+AAE+ABJ+LTR:100'

Counter No	Tag	St	MaxOcc	Level	Name
0430	SG11	C	999	2	GID-FTX-MEA-PCI-SG13-SG14
0500 36	MEA	C	9	3	Gross Litres Found

		Standard	Implementation		DOR	BBB	VOR	AOR	EOR	ALD	Business Rules
Tag	Name	St Format	St Format	Usage / Remark							
MEA											
6311	Measurement purpose code qualifier	M an..3	M an..3	AAL = Cargo loaded							
C502	Measurement details	C	C								
6313	Measured attribute code	C an..3	C an..3	BRF = Ascertained volume							
6321	Measurement significance code	C an..3	N	Not used							
6155	Non-discrete measurement name code	C an..17	N	Not used							
6154	Non-discrete measurement name	C an..70	N	Not used							
C174	Value/range	C	C								
6411	Measurement unit code	C an..8	C an..8	If the cargo is liquid bulk, the Gross Litres, and Gross Litres found fields become mandatory. LTR = litre	C	C	C	C			
6314	Measure	C an..18	C n..18	GROSS LITRES FOUND If the cargo is liquid bulk, the Gross Litres, and Gross Litres found fields become mandatory. Gross litres found on unpacking. Mandatory for liquid bulk.	C	C	C	C			
6162	Range minimum quantity	C n..18	N	Not used							
6152	Range maximum quantity	C n..18	N	Not used							
6432	Significant digits quantity	C n..2	N	Not used							
7383	Surface or layer code	C an..3	N	Not used							

Remark:

Example:

MEA+AAL+BRF+LTR: 65'

Counter No	Tag	St	MaxOcc	Level	Name
0430	SG11	C	999	2	GID-FTX-MEA-PCI-SG13-SG14
0510 37	PCI	C	9	3	Package identification

		Standard	Implementation								Business Rules
Tag	Name	St Format	St Format	Usage / Remark	DOR	BBB	VOR	AOR	EOR	ALD	
PCI											
4233	Marking instructions code	C an..3	C an..3	24 = Shipper assigned							
C210	Marks & labels	C	C								
7102	Shipping marks description	M an..35	M an..35	MARKS AND NUMBERS - 1 <i>Mandatory on CARGO TYPE INDICATOR = Break Bulk. If LB, DB then N/A</i>	M	C	C	M	M	M	
7102	Shipping marks description	C an..35	C an..35	MARKS AND NUMBERS - 2	O	O	O	O	O	O	
7102	Shipping marks description	C an..35	C an..35	MARKS AND NUMBERS - 3	O	O	O	O	O	O	
7102	Shipping marks description	C an..35	C an..35	MARKS AND NUMBERS - 4	O	O	O	O	O	O	
7102	Shipping marks description	C an..35	C an..35	MARKS AND NUMBERS - 5	O	O	O	O	O	O	
7102	Shipping marks description	C an..35	C an..35	MARKS AND NUMBERS - 6	O	O	O	O	O	O	
7102	Shipping marks description	C an..35	C an..35	MARKS AND NUMBERS - 7	O	O	O	O	O	O	
7102	Shipping marks description	C an..35	C an..35	MARKS AND NUMBERS - 8	O	O	O	O	O	O	
7102	Shipping marks description	C an..35	C an..35	MARKS AND NUMBERS - 9	O	O	O	O	O	O	
7102	Shipping marks description	C an..35	C an..35	MARKS AND NUMBERS - 10	O	O	O	O	O	O	
8169	Full or empty indicator code	C an..3	N	Not used							
C827	Type of marking	C	N								
7511	Marking type code	M an..3	N	Not used							
1131	Code list identification code	C an..17	N	Not used							
3055	Code list responsible agency code	C an..3	N	Not used							

Remark:

Example:

PCI+24+Marks and numbers 1:Marks and numbers 2:Marks and numbers 3:Marks and numbers 4:Marks and numbers 5:Marks and numbers 6:Marks and numbers 7:Marks and numbers 8:Marks and numbers 9:Marks and numbers 10'

Counter No	Tag	St	MaxOcc	Level	Name
0530	<b>SG13</b>	M	999	3	<b>SGP</b>
0540 38	<b>SGP</b>	M	1	3	<b>Split goods placement</b>

		Standard	Implementation		DOR	BBB	VOR	AOR	EOR	ALD	Business Rules
Tag	Name	St Format	St Format	Usage / Remark							
SGP											
C237	Equipment identification	M	M								
8260	Equipment identifier	C an..17	C an..17	<b>CONTAINER NUMBER/WAGON NUMBER</b> Container number that contains this consignment. Use 1 for non-containerized cargo.	M		M	M	M	M	Container number that contains this consignment. Use 1 for non-containerized cargo.
1131	Code list identification code	C an..17	N	Not used							
3055	Code list responsible agency code	C an..3	N	Not used							
3207	Country identifier	C an..3	N	Not used							
7224	Package quantity	C n..8	C n..8	<b>CONTAINER CONTENT</b> The actual number of packages in the container for this consignment.	M		O		O	O	The actual number of packages in the container for this consignment.

**Remark:**

**Example:**

SGP+NONU1234567+9'



Counter No	Tag	St	MaxOcc	Level	Name
0560	<b>SG14</b>	C	99	3	<b>DGS</b>
0570 39	<b>DGS</b>	M	1	3	<b>Dangerous goods</b>

Standard		Implementation									Business Rules
Tag	Name	St Format	St Format	Usage / Remark	DOR	BBB	VOR	AOR	EOR	ALD	
DGS											
8273	Dangerous goods regulations code	C an..3	C an..3								For Air, use IATA Dangerous Goods Code and for rail use TFR dangerous goods code
C205	Hazard code	C	C								
8351	Hazard identification code	M an..7	M an..7	<b>DANGEROUS GOODS CODE/CLASS</b>				O	O	O	The IMO dangerous goods class number
8078	Additional hazard classification identifier	C an..7	N	Not used							
8092	Hazard code version identifier	C an..10	N	Not used							
C234	UNDG information	C	C								
7124	United Nations Dangerous Goods (UNDG) identifier	C n4	C n4	<b>UNDG NUMBER</b>	O	O	O				
7088	Dangerous goods flashpoint description	C an..8	N	Not used							
C223	Dangerous goods shipment flashpoint	C	N								
7106	Shipment flashpoint degree	C n3	N	Not used							
6411	Measurement unit code	C an..8	N	Not used							
8339	Packaging danger level code	C an..3	N	Not used							
8364	Emergency procedure for ships identifier	C an..8	N	Not used							
8410	Hazard medical first aid guide identifier	C an..4	N	Not used							
8126	Transport emergency card identifier	C an..10	N	Not used							
C235	Hazard identification placard details	C	N								
8158	Orange hazard placard upper part identifier	C an..4	N	Not used							
8186	Orange hazard placard lower part identifier	C an4	N	Not used							
C236	Dangerous goods label	C	N								
8246	Dangerous goods marking identifier	C an..4	N	Not used							
8246	Dangerous goods marking identifier	C an..4	N	Not used							
8246	Dangerous goods marking identifier	C an..4	N	Not used							
8246	Dangerous goods marking identifier	C an..4	N	Not used							
8255	Packing instruction type code	C an..3	N	Not used							
8179	Transport means description code	C an..8	N	Not used							
8211	Hazardous cargo transport authorisation code	C an..3	N	Not used							
C289	Tunnel Restriction	C	N								
8461	Tunnel Restriction Code	C an..6	N	Not used							
1131	Code list identification code	C an..17	N	Not used							
3055	Code list responsible agency code	C an..3	N	Not used							

**Remark:**

**Example:**  
DGS++1636+1636'

No = Consecutive segment number  
 MaxOcc = Maximum occurrence of the segment/group  
 Counter = Counter of segment/group within the standard

St = Status  
 EDIFACT: M=Mandatory, C=Conditional  
 User specific: M=Mandatory, O=Optional, C=Conditional

Counter No	Tag	St	MaxOcc	Level	Name
0660 40	<b>CNT</b>	C	1	0	Control total

		Standard	Implementation		DOR	BBB	VOR	AOR	EOR	ALD	Business Rules
Tag	Name	St Format	St Format	Usage / Remark							
CNT											
C270	Control	M	M								
6069	Control total type code qualifier	M an..3	M an..3	<b>8 = Total pieces</b>							
6066	Control total quantity	M n..18	M n..18	<b>TOTAL NUMBER OF PACKAGES</b>	M	M	M	M	M	M	For all cargo, i.e. containerised cargo, bulk and break-bulk, the field TOTAL NUMBER OF PACKAGES must contain the accumulated total of all NUMBER OF PACKAGES FOUND fields reported within the COSTCO message.
6411	Measurement unit code	C an..8	N	Not used							

Remark:

Example:  
CNT+8:9'

Counter	No	Tag	St	MaxOcc	Level	Name
---------	----	-----	----	--------	-------	------

0670 41 **UNT** M 1 0 **Message trailer**

		Standard	Implementation								Business Rules
Tag	Name	St Format	St Format	Usage / Remark	DOR	BBB	VOR	AOR	EOR	ALD	
UNT											
0074	Number of segments in a message	M n..10	M n..10	Number of segments from UNH to UNT (including both)							
0062	Message reference number	M an..14	M an..14	Must match Message Reference Number in UNH							

**Remark:**

**Example:**  
UNT+51+1212121212'

No = Consecutive segment number  
 MaxOcc = Maximum occurrence of the segment/group  
 Counter = Counter of segment/group within the standard  
 St = Status  
 EDIFACT: M=Mandatory, C=Conditional  
 User specific: M=Mandatory, O=Optional, C=Conditional

Counter	No	Tag	St	MaxOcc	Level	Name
0000	42	<b>UNZ</b>	M	1	0	Interchange trailer

		Standard	Implementation									
Tag	Name	St Format	St Format	Usage / Remark	DOR	BBB	VOR	AOR	EOR	ALD	Business Rules	
UNZ												
0036	Interchange control count	M n..6	M n..6	Number of messages in interchange	M	M	M	M	M	M		
0020	Interchange control reference	M an..14	M an..14	Must match Interchange control reference in UNB	M	M	M	M	M	M		

**Remark:**

**Example:**  
UNZ+1+1234567890'

No = Consecutive segment number  
 MaxOcc = Maximum occurrence of the segment/group  
 Counter = Counter of segment/group within the standard  
 St = Status  
 EDIFACT: M=Mandatory, C=Conditional  
 User specific: M=Mandatory, O=Optional, C=Conditional